

## INSIDE THIS ISSUE:

---

1. Arc Hydro Groundwater Tools Version 1.0 Released!
  2. Aquaveo Webinar Series
  3. Join the Aquaveo Team
  4. Upcoming Training Courses
- 

## EMS-I IS NOW AQUAVEO:

As of October 1, 2008 ems-i will operate under the name Aquaveo. For more info, please visit our website at: [www.aquaveo.com/merge](http://www.aquaveo.com/merge)

## Arc Hydro Groundwater Tools Version 1.0 Released!

ESRI and Aquaveo are pleased to bring you the Arc Hydro Groundwater Tools to help you better manage your groundwater data within ArcGIS. Based on the Arc Hydro Groundwater data model, the tools will enable you to take advantage of the ArcGIS platform to archive, manage, and visualize your groundwater information.

Two sets of tools are currently available:

### Groundwater Analyst

Tools in the Groundwater Analyst will help you import data into your Arc Hydro geodatabase, manage key attributes, and visualize your data. With Groundwater Analyst you will be able to import a variety of datasets (wells, time series, cross sections, volumes) into your

Please see Arc Hydro Groundwater on page 2

## Aquaveo Webinar Series

2009 marks the launch of Aquaveo's webinar series. The first webinar, *Spatial Hydrologic Modeling Using GSSHA and WMS*, was hosted by the Engineering Research and Development Center of the US Army Corps of Engineers and lasted one-hour. Registration was free. A

Please see Webinar on page 3



*Arc Hydro Groundwater*, continued from page 1

geodatabase, manage symbology of layers in ArcMap and ArcScene, map and plot time series, and create common products such as water level, water quality, and flow direction maps.

Price: Free to all licensed users of ArcGIS 9.2 or later

## MODFLOW Analyst

The MODFLOW Analyst enables you to create, archive, and visualize modflow models within ArcGIS. The geoprocessing tools are based on the MODFLOW Data Model, which supports the storage of a complete modflow model (including grid structure, inputs, and results) within an ArcGIS geodatabase. Tools in the toolkit enable you to import an existing model into the geodatabase and geo-reference the model so you can visualize and analyze the results in context with other GIS data, as well as create new models from GIS features.

\$1500 USD—Introductory Price

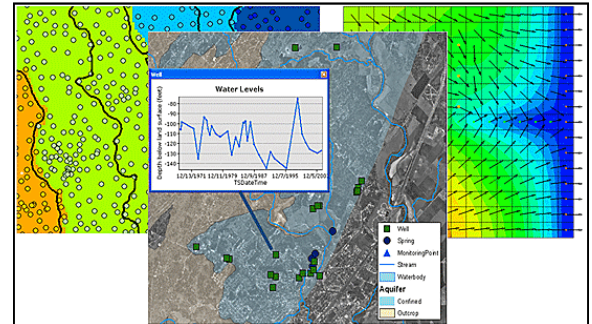
Additionally, we continue to develop Subsurface Analyst:

## Subsurface Analyst

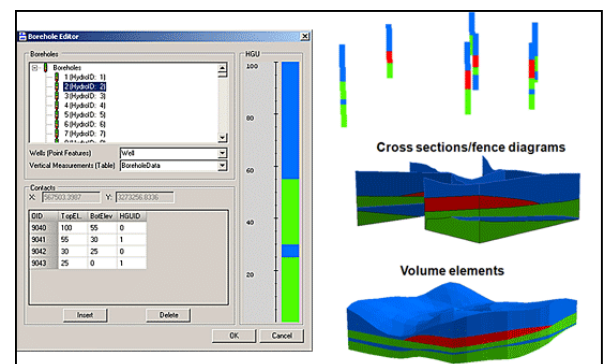
Coming Soon! —With Subsurface Analyst you will be able to create and visualize 3D hydrogeologic models, starting with classification and visualization of borehole logs, creation and editing of cross sections, and generation of 3D volumes.

\$1500 USD—Introductory Price

Learn more at: [www.aquaveo.com/archydro](http://www.aquaveo.com/archydro)



Groundwater Analyst



Subsurface Analyst

**AQUAVEO**  
Water Modeling Solutions

801 302-1400 | [info@aquaveo.com](mailto:info@aquaveo.com)  
[www.aquaveo.com](http://www.aquaveo.com)



*Webinar*, continued from page 1

recording of the webinar is available for those who were unable to attend. To view the January 2009 webinar, go to [www.xmswiki.com/WMS:January2009Webinar](http://www.xmswiki.com/WMS:January2009Webinar)

Here's what attendees had to say about the first webinar:

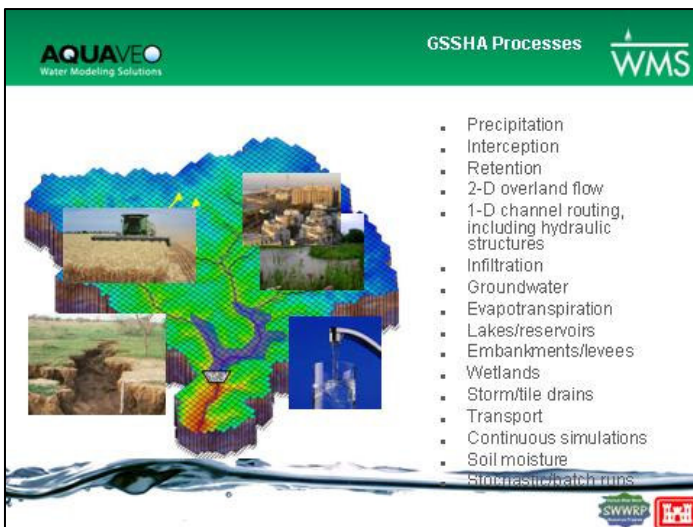
*"I like seeing the selections being made on a computer screen to facilitate my use... I do much better with a demonstration than with just reading a manual. Thanks for this opportunity"*

*"The overall presentation was comprehensive and well organized. The example used was easy to understand, and yet complex enough that it covered most of the tools that one would normally utilize when doing this type of drainage basin"*

*"I found the interactive format very helpful, and the tutors knowledgeable, pleasant, and professional. The pace was fast enough to hold my attention, yet slow enough that I never felt left behind"*

*"It was all very good... WMS has matured tremendously and that is good to see."*

Stay tuned for the next Aquaveo webinar. To receive email notices of future webinars, contact [sales@aquaveo.com](mailto:sales@aquaveo.com).



Spatial Hydrologic Modeling Using GSSHA and WMS

## Join the Aquaveo Team

Aquaveo is an exciting, growing company that is always looking for people who are excellent in every way—people who can get the job done. Aquaveo employees are the greatest asset we have. We believe in treating our employees well. We provide you with all the tools you need to succeed in your career. We offer a flexible work schedule, a good compensation rate, flexible work hours, and an ethical and family-oriented work environment.

Aquaveo currently has several positions available:

**Software Engineer—Groundwater Modeler:** 5+ years experience programming in C++ or another object oriented language. Excellent understanding of groundwater modeling. 5++ years experience in groundwater modeling.

**Software Engineer—C++:** Work in a growing Civil Engineering software company that provides water modeling products and services around the world. The position with Aquaveo will help with core development of these products.

**Software Engineer:** Work in a growing Civil Engineering software company that provides water modeling products and services around the world. The position with Aquaveo will help with core development of these products.

### CAREERS:

---

Go to [www.aquaveo.com/careers](http://www.aquaveo.com/careers) to view the most current list of job openings at Aquaveo.

To respond to a job opportunity, send an email to [jobs@aquaveo.com](mailto:jobs@aquaveo.com)



## Upcoming Training Courses

The Aquaveo staff is committed to providing training courses that improve your knowledge of the Groundwater Modeling System (GMS), Surface-water Modeling System (SMS), and the Watershed Modeling System (WMS) software. These are high quality, hands-on training courses taught by experienced instructors who are experts in their specialty. We also provide custom training and consulting services to your company on demand.

### Groundwater Flow & Transport with GMS

Orlando, Florida USA - March 10-13, 2009

Katowice, Poland - March 23-26, 2009

Helsinki, Finland - June 1-4, 2009

Las Vegas, Nevada USA - October 6-9, 2009

### Advanced Transport & Bioremediation with GMS

Honolulu, Hawaii USA - August 10-13, 2009

### 2D Hydrodynamic Flow & Transport with SMS

Orlando, Florida USA - March 10-13, 2009

Las Vegas, Nevada USA - October 13-16, 2009

### Coastal Circulation & Wave Modeling with SMS

Orem, Utah USA - December 8-11, 2009

### Hydrologic and Hydraulic Modeling with WMS

Orlando, Florida USA - March 10-13, 2009

Las Vegas, Nevada USA - October 13-16, 2009

### 2D Hydrologic Modeling with GSSHA & WMS

4-day Option - Provo, Utah USA - May 12-15, 2009

3-day Option - Provo, Utah USA - May 12-14, 2009



### TRAINING:

Go to [www.aquaveo.com/training-courses](http://www.aquaveo.com/training-courses) to view the most current list of Aquaveo training courses.

Contact us to learn about scheduling a custom training course or request consulting help on your project.

