

Aquaveo News

July 2008
Volume 1 Issue 4

Aquaveo, 75 South 200 East, Suite 201, Provo, UT 84606
<http://www.aquaveo.com/> · info@aquaveo.com · (801) 691.5528

WMS 8.1 Release

A New Standard in Watershed Modeling

This month marks the release of WMS 8.1 and a new standard in watershed modeling. With WMS 8.1, you will have access to the following features:

WATERSHED MODELING SYSTEM (WMS) EDITION

INSIDE THIS ISSUE

- 1 WMS 8.1: A New Standard in Subsurface Modeling
- 1 Join the Aquaveo Team
- 2 ArcHydro Groundwater
- 3 Expansion Team: Aquaveo Consulting
- 4 More on WMS and Upcoming Training Courses

Linking HY-8 and WMS

Watersheds are complex systems, even more so when hydraulic structures are thrown into the equation. How can culverts affect downstream peak flows? With WMS 8.1, you can answer that question yourself. To see how, click here: <http://wms.aquaveo.com/HY-8.htm>

2D Hydrology

With WMS 8.1, 2D hydrology has never been so easy. Aquaveo has teamed with the Engineering Research and Development Center of

Please see *WMS 8.1* on page 2

Join the Aquaveo Team

Aquaveo is an exciting, growing company that is always looking for people who are excellent in every way-people who can get the job done. Aquaveo's employees are the greatest asset we have. We believe in treating our employees well. We provide you with all the tools you need to succeed in your career. We offer a flexible work schedule, a good compensation rate, flexible work hours, and an ethical and family-oriented work environment.

Aquaveo currently has several positions available. Currently, we need software developers to work on future versions of the Groundwater Modeling System (GMS). You will be working on a fast-paced software development team to design, develop, and test new functionality in GMS.

Please see *Careers* on page 3

*With WMS 8.1 2D
Hydrology has never
been so easy...*

Arc Hydro Groundwater

ESRI and Aquaveo are pleased to bring you the Arc Hydro Groundwater Toolkit to help you visualize and georeference your groundwater data within ArcGIS. The Arc Hydro Groundwater Toolkit will include three separate applications: the basic toolkit, the Subsurface Analyst and the MODFLOW Analyst.

Basic Toolkit

The basic toolkit will be free to all ArcGIS users and will include a set of functions allowing users to import and visualize groundwater data

Subsurface Analyst

The Subsurface Analyst will be an add-on application to ArcGIS. It allows importing and advanced visualization of the borehole or other subsurface data.

MODFLOW Analyst

The MODFLOW will be another add-on application to ArcGIS. It provides features for storing, accessing, and modifying data specifically from MODFLOW groundwater models.

Please see *Arc Hydro Groundwater* on page 4

WMS 8.1 from page 1

the Army Corps of Engineers to develop an interface to GSSHA 3.0b, the new 2D hydrologic model that is changing our understanding of watersheds.

Additional capability has been added to the HMS interface. WMS 8.1 lets users create a grid representing an HMS MODClark model at any resolution and compute a Curve Number, rainfall value, and travel time at each cell on the grid. The powerful MODClark modeling capabilities in WMS are not available in any other software product.

Among other new features is the ability to use NEXRAD rainfall data in both GSSHA and HEC-HMS.

Google Earth movie files

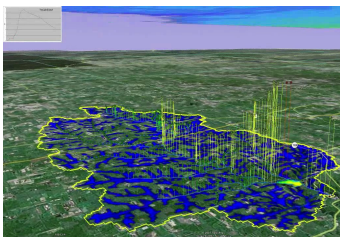
Use WMS 8.1 to render a movie of your 2D hydrologic simulations and make them viewable in Google Earth.

More

See a full description of what's new in WMS 8.1 at www.xmswiki.com.



Visualize geologic data such as Boreholes, Cross Sections, and Solids



WMS 8.1 lets users record video animations of hydrologic model runs so that they can be viewed in Google Earth

Expansion Team: Aquaveo Consulting

In addition to state of the art modeling tools and high quality training courses, Aquaveo has now expanded to provide consulting services on a variety of engineering projects. By combining a team of professional civil engineers with a team of expert software developers, Aquaveo has created a multi-faceted and versatile engine capable of tackling the most complex modeling problems.

Only a year old, the consulting team is always looking to add new projects. Aquaveo currently provides only modeling services. Data required to build the model, and any engineering interpretation of the results, must be provided by the client. To learn more about Aquaveo consulting services, or to discuss possible teaming opportunities, send an email to consulting@aquaveo.com.

“By combining a team of professional civil engineers with a team of expert software developers, Aquaveo has created a multi-faceted and versatile engine capable of tackling the most complex modeling problems.”

Careers from page 1

Aquaveo is looking for both part-time and full-time programmers. Both positions require some understanding of and experience with the C++ programming language, and some amount of Computer Science education.

Aquaveo is also looking for engineers with experience in hydraulic and hydrologic modeling projects, especially those registered as professional engineers with a specialty in this field. For more information on Aquaveo or either of these exciting job opportunities, please visit Aquaveo’s web site at: <http://www.aquaveo.com/careers/>

Arc Hydro Groundwater from page 2
More

Learn more about arc Hydro Groundwater today by visiting www.ems-i.com/archydro

Upcoming Training Courses

The Aquaveo staff is committed to providing training courses that improve your knowledge of the Groundwater Modeling System (GMS), Surfacewater Modeling System (SMS), and the Watershed Modeling System (WMS) software. These are high quality, hands-on training courses taught by experienced instructors who are experts in their specialty. We also provide custom training and consulting services to your company on demand:

- **Groundwater Flow & Transport Modeling with GMS**
 - August 5-8, 2008 | Melbourne, Australia
 - August 12-15, 2008 | Perth, Australia
- **2D Hydrodynamic Flow & Transport with SMS** (October 14-17, 2008 | San Diego, CA - USA)
- **Hydrologic and Hydraulic Modeling Using GIS and the Watershed Modeling System** (October 14-17, 2008 | San Diego, CA - USA)

Hurry and register for these courses today before they are full! EMS-I and Aquaveo provide these training courses to help you use GMS, SMS, and WMS more effectively. Visit www.ems-i.com to find a training course that meets your needs or call EMS-I at 1.801.302.1400 to learn about scheduling a custom training course or request consulting help on your project.

ARC Hydro Groundwater Toolkit:

- Data Import wizards
- 3D geometry importer
- Borehole/well editor
- HydroID, hydrocode management
- Time Series Statistics Tool
- Automated queries
 - Time series generator
 - Time series grapher
 - Water table interpolator
- Flow Direction Map Generator*

Subsurface Analyst:

- Create 3D Borelines from borehole log*
- 3D geometry import to GeoVolumes
- 3D geometry import to GeoSections
- Borehole/Well Editor*
- Cross Section Log Layout

MODFLOW Analyst:

- MODFLOW Model Builder
 - Interpolate to arrays
 - Building Stress packages from features
- MODFLOW model importing
 - Read MODFLOW Grids*
 - Read MODFLOW heads*
 - Read Entire MODFLOW solution
- MODFLOW model exporting
- MODFLOW Visualizing
 - Fill output arrays
 - Head Contours
 - Automated MODFLOW Query and Map Display

*Available free to Arc Hydro Groundwater Toolkit users.



75 S 200 E
Suite 201
Provo, Utah 84606

Phone: (801) 691.5528
Fax: (801) 691.5529
E-mail: info@aquaveo.com