

Aquaveo News

January 2008
Volume 1 Issue 2

Aquaveo, 75 South 200 East, Suite 201, Provo, UT 84606
<http://www.aquaveo.com/> · info@aquaveo.com · (801) 691.5528

New Maintenance Model

New Maintenance Model for SMS Licenses— Upgrade Fees Eliminated

SURFACEWATER MODELING SYSTEM (SMS) EDITION

INSIDE THIS ISSUE

- 1 SMS: New Maintenance Model
- 1 Announcing the Release of SMS v10.0
- 2 GMS 6.5 Released
- 3 SMS Model Highlight: TUFLOW
- 4 More on SMS and Upcoming Training Courses

With the release of SMS v10.0, EMS-I will be switching to a maintenance model for this and future versions of SMS. A maintenance model helps you better plan and budget for software upgrade costs and helps us ensure continued development enhancements and improved technical support. You will no longer have to pay upgrade fees for each new version; rather, you will automatically receive future versions through your annual maintenance fee for each SMS license, in addition to intermediate updates and technical support.

Please see *New Maintenance Model* on page 2

Announcing the Release of SMS v10.0

SMS v10.0 is now available for download. This release offers new features and usability enhancements to help you be more productive than ever. Significant upgrades to existing features and improvements to many of the model interfaces are also included. Click the link below to download SMS v10.0:

http://www.ems-i.com/members/download_center.php

New in SMS v10.0

SMS version 10.0 has many new features including:

Please see *SMS 10.0 Released* on page 3

SPECIAL OFFER:
*Upgrade to SMS v10.0
by April 1, 2008, and
receive a 10% discount
on your maintenance
fees*

GMS 6.5 Released

GMS (Groundwater Modeling System) v6.5 is now available for download. This release offers new features and usability enhancements to help you be more productive than ever. You will enjoy many useful additions such as the “Get Data from Web” tool and the capability to export KMZ files for Google Earth. Significant upgrades to existing features and improvements to many of the model interfaces are also included. See a full description of the new features in *GMS V6.5* at:

http://www.xmswiki.com/index.php?title=GMS:What's_New_in_GMS_6.5

With the release of *GMS v6.5*, EMS-I will be switching to the maintenance model for this and future versions of *GMS*. This maintenance model will feature the same attributes as the *SMS* maintenance model described on page 1 of this newsletter.

SPECIAL OFFER: Upgrade to *GMS v6.5* by June 1, 2008, and receive a complimentary ArcView license with a full year of maintenance.

As a thank you for your early participation in the new maintenance model, you will receive a complimentary copy of ESRI’s ArcView software if you upgrade to *GMS v6.5* by June 1, 2008. You can use ArcView to seamlessly and more efficiently import and export GIS data using ArcGIS

Please see *GMS 6.5 Released* on page 4

New Maintenance Model from page 1

What does this change mean to you?

Here is how the new maintenance model will affect you:

- If you currently have *SMS v9.2* licenses, you only need to pay the 15% annual maintenance fee to upgrade to version 10.0.
- If you currently have older versions of *SMS*, you will have to upgrade your license to *SMS v9.2* at current upgrade fees and then pay the 15% annual maintenance fee. As a convenience, current *SMS v9.2* users will receive invoices for the annual maintenance fee.
- Any new licenses purchased will include the first year’s maintenance fees. Any new license of *SMS v9.2* purchased in the last year will be considered to have their maintenance current for one year after their initial purchase.

Each licensee has the option of paying the maintenance to go the new version and continue to receive technical support. Of course, you can continue to use your current version of *SMS* even if you choose not to pay maintenance. However, technical support for all *SMS* users without current maintenance will end on **April 1, 2008**.

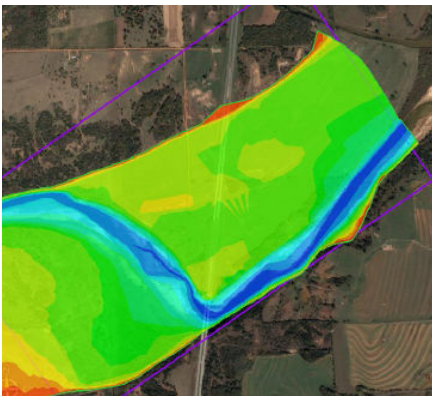
*“...many useful additions such as the “Get Data from Web” tool and the capability to export KMZ files for Google Earth have been added to the new version of *GMS: GMS 6.5*.”*

SMS Model Highlight: TUFLOW

TUFLOW was added into SMS 9.2 and has seen many improvements in SMS 10.0. TUFLOW is a riverine, coastal, and urban hydrodynamics package with an emphasis in flooding applications. TUFLOW uses a finite differencing scheme that is very stable for wetting and drying. Consider adding the TUFLOW model and interface to your existing SMS package.

The TUFLOW computational engine computes 1D and 2D hydraulic solutions. For more information see the TUFLOW webpage

<http://www.tuflow.com>



“TUFLOW is a riverine, coastal, and urban hydrodynamics package with an emphasis in flooding applications. TUFLOW uses a finite differencing scheme that is very stable for wetting and drying.”

SMS 10.0 Released from page 1

Vista Support

- Improved DWG Support
- KMZ File Export for Google Earth
- Locator Tool for Web Data Import
- Help system is an on line Wiki

Model Enhancements

- ADCIRC - Spatial Attributes
- CGWAVE - Varied bed friction & floating docks
- PTM - v2.0 support, auto hydrodynamic inputs
- TUFLOW - Simplified boundary conditions
- CMS - Coastal Modeling System from ERDC

See a full description of the new features in SMS V10.0 at:

http://www.xmswiki.com/index.php?title=SMS:New_in_SMS_10.0

Models Removed

Please note that with the release of version 10.0 the HVEL2D and SED2D model interfaces have been removed from SMS. These models are used infrequently, and are no longer actively supported by the Army Corps. Anyone using these models may continue to do so with SMS v9.2.

GMS 6.5 Released from page 2

utilities from within the GMS interface. Access to a new or additional ArcView license will help you perform groundwater modeling tasks more efficiently and provide you with all the additional capabilities available within ArcView.

Moreover, EMS-I is working with ESRI to develop the Arc Hydro Groundwater data model for the next version of ArcView, scheduled for release in 2008. Because your ArcView license will include a full

year of maintenance, you will be eligible to receive that release of ArcView when it becomes available.

ArcView will be shipped to GMS 6.5 users directly through ESRI distribution channels within 4-6 weeks of your upgrade to v6.5. If you wish to continue using ArcView after the first year, you will simply need to renew the ArcView annual maintenance.

More on SMS and Upcoming Training Courses

Want to do more with SMS?

SMS supports many models for hydrodynamics, coastal, wave, and particle tracking applications. Contact sales by calling 801-302-1400 or emailing sales@ems-i.com to discover and purchase useful additions to your existing SMS license. If you would like to try any of the new modules, or if you want to demo SMS for a limited time, simply contact us for a temporary password at (http://www.ems-i.com/Password_Requests/password_requests.html).

Training

The Aquaveo staff is committed to providing training courses that improve your knowledge of the Groundwater Modeling System (GMS), Surfacewater Modeling System (SMS), and the Watershed Modeling System (WMS) software. These are high quality, hands-on training courses

taught by experienced instructors who are experts in their specialty. We also provide custom training and consulting services to your company on demand. The following training courses are scheduled during the next few months:

- **HYDRO-AS 2D** (March 12-14, 2008 | Munich, Germany)
- **Groundwater Flow & Transport Modeling with GMS** (April 8-11, 2008 | Orlando, Florida USA)
- **1D/2D Hydraulic Modeling with SMS and TUFLOW** (April 8-11, 2008 | Orlando, FL USA)
- **2D Hydrodynamic Flow & Transport with SMS** (April 15-17, 2008 | Orlando, Florida USA)
- **Hydrologic and Hydraulic Modeling with WMS** (April 15-18, 2008 | Orlando, Florida USA)

Register for these courses today! In addition to the new online help (<http://www.xmswiki.com/>) and the technical support staff (<http://www.aquaveo.com/technical-support/>), EMS-I and Aquaveo provide these training courses to help you use GMS, SMS, and WMS more effectively. Visit the training web page (<http://www.ems-i.com/Training/training.html>) to find a training course that meets your needs or call EMS-I at 1.801.302.1400 to learn about scheduling a custom training course or request consulting help on your project.



Aquaveo

75 South 200 East
Suite 201
Provo, UT 84606

Phone: (801) 691.5528

Fax: (801) 691.5529

E-mail: info@aquaveo.com