

# **Register AHGW with a Single User USB Hardware Lock**

Applies to AHGW versions: 3.x  
Please contact Aquaveo for help  
with other versions

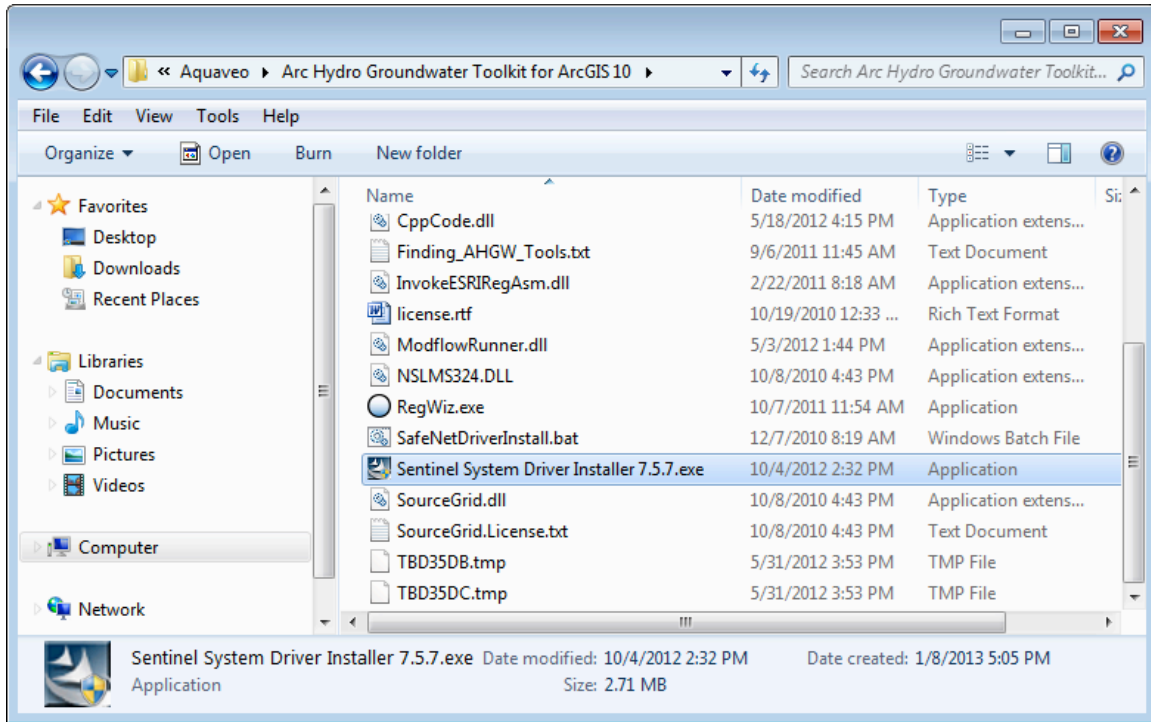
**We're here to help – Please contact us with any questions**

**Sales & Billing:** +1(801) 691-5528  
**Technical Support:** +1(801) 691-5530

[sales@aquaveo.com](mailto:sales@aquaveo.com)  
[support@aquaveo.com](mailto:support@aquaveo.com)

[www.aquaveo.com](http://www.aquaveo.com)

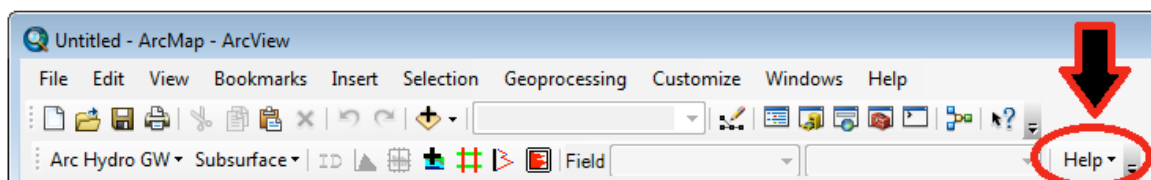
1. Install the hardware lock drivers. If hardware lock drivers have already been installed, skip to the next step. The drivers can be installed by running the **Sentinel System Driver Installer.exe** program found in the AHGW installation directory.



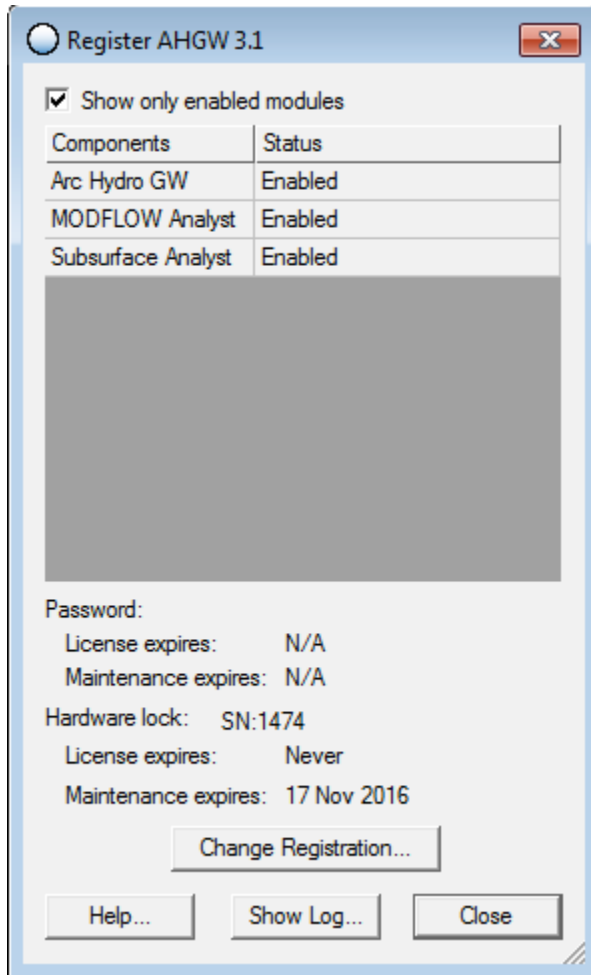
2. After installing the hardware lock drivers, plug the Aquaveo hardware lock into an available USB port.



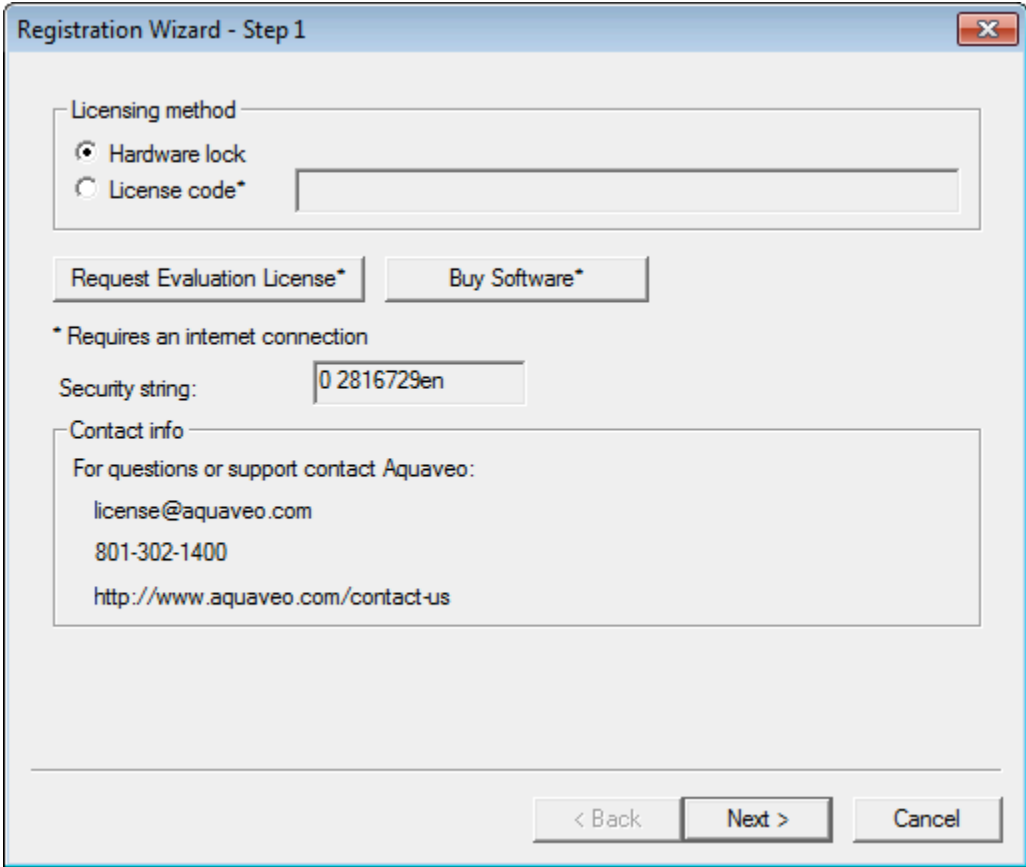
3. Start ArcMap and ensure that the that the AHGW Toolbar is visible by right-clicking in the toolbar area and checking **Arc Hydro Groundwater Toolbar**.
4. Locate the **Help** drop-down menu from the AHGW Toolbar and select **Register**.



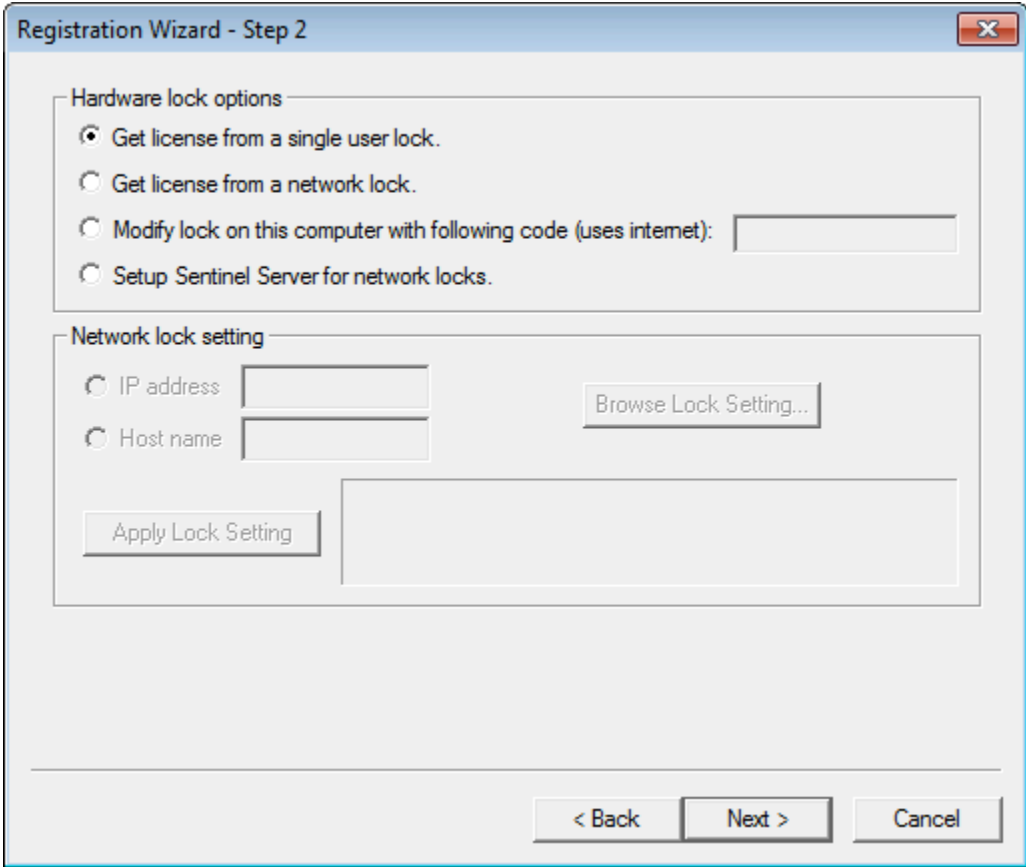
5. The program should automatically detect the hardware lock. If the registration dialog does not show any enabled components, then click the **Change Registration...** button.



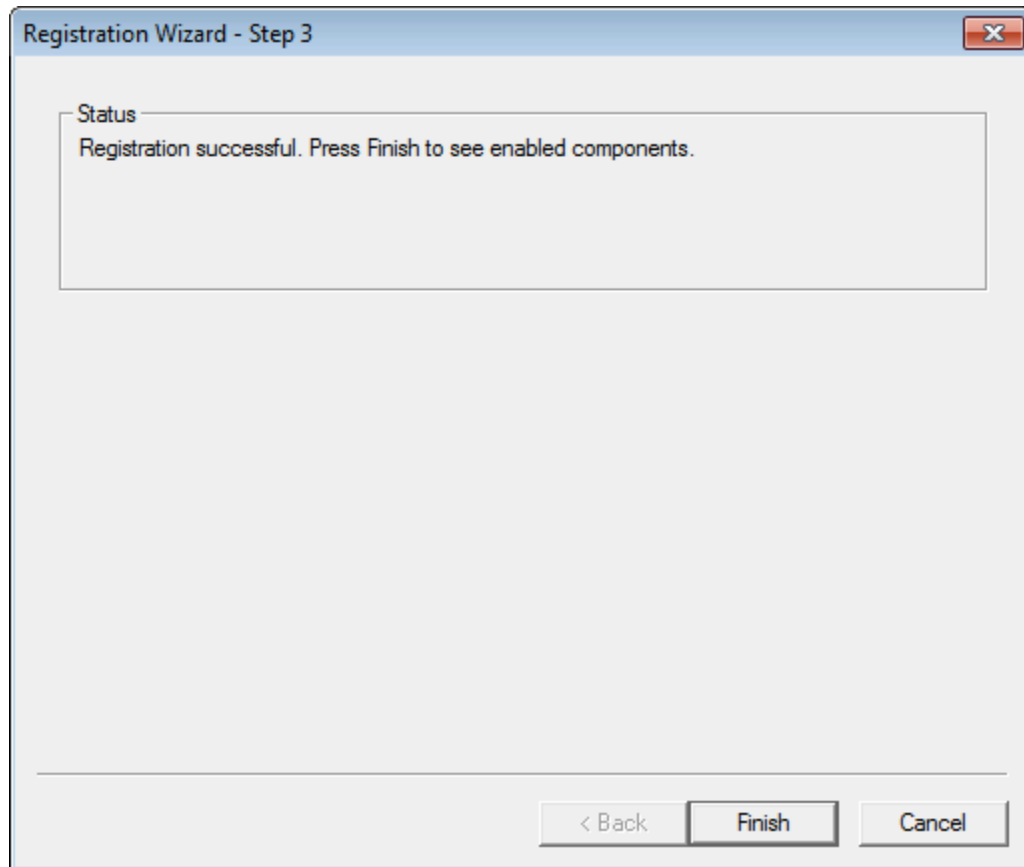
- 6. Select **Hardware lock** for the Licensing method and click the **Next >** button.



- 7. In the Hardware lock options, select **Get license from a single user lock** and click the **Next >** button.



8. If the registration is successful, click **Finish** to exit the Registration Wizard.



- 9. The Register AHGW dialog displays the registered components, licensing method, and license expiration dates.

