

## **Register GMS with a Network USB Hardware Lock**

Applies to GMS versions: 9.x, 10.x  
Please contact Aquaveo for help  
with other versions

**We're here to help – Please contact us with any questions**

**Sales & Billing:**

**+1(801) 691-5528**

**[sales@aquaveo.com](mailto:sales@aquaveo.com)**

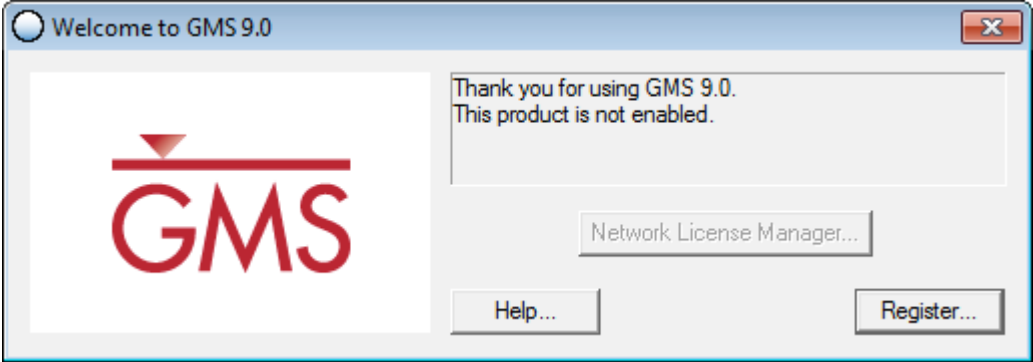
**Technical Support:**

**+1(801) 691-5530**

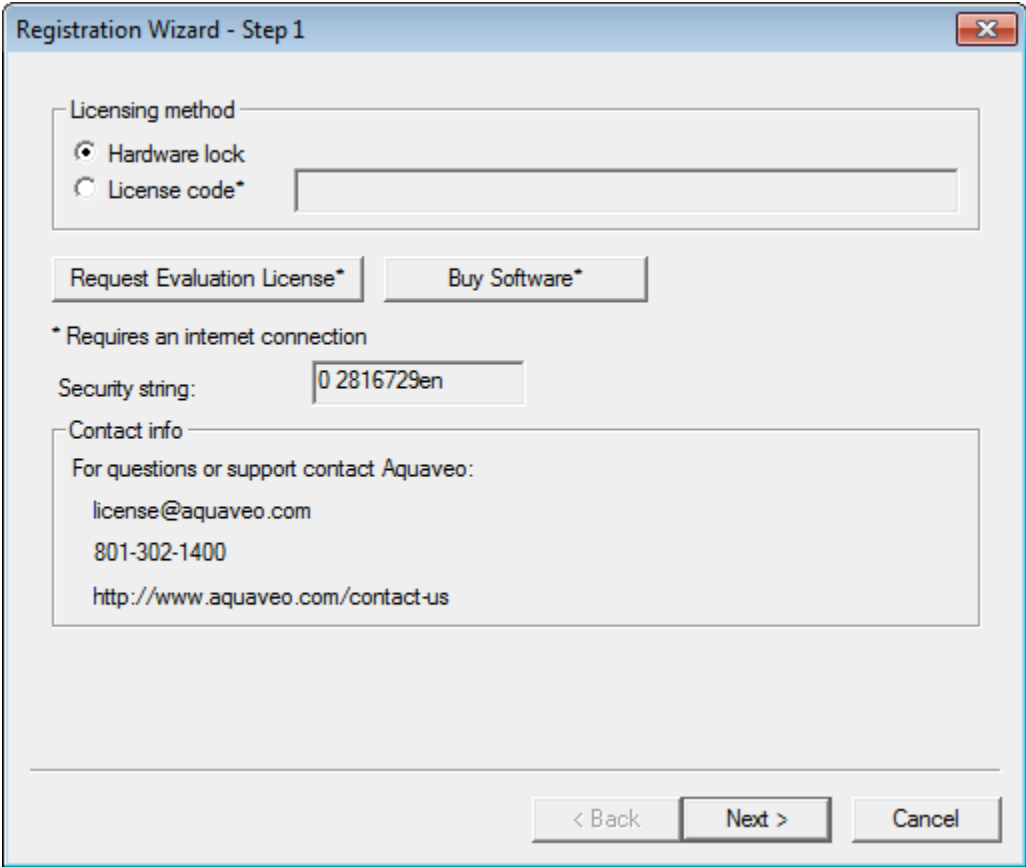
**[support@aquaveo.com](mailto:support@aquaveo.com)**

**[www.aquaveo.com](http://www.aquaveo.com)**

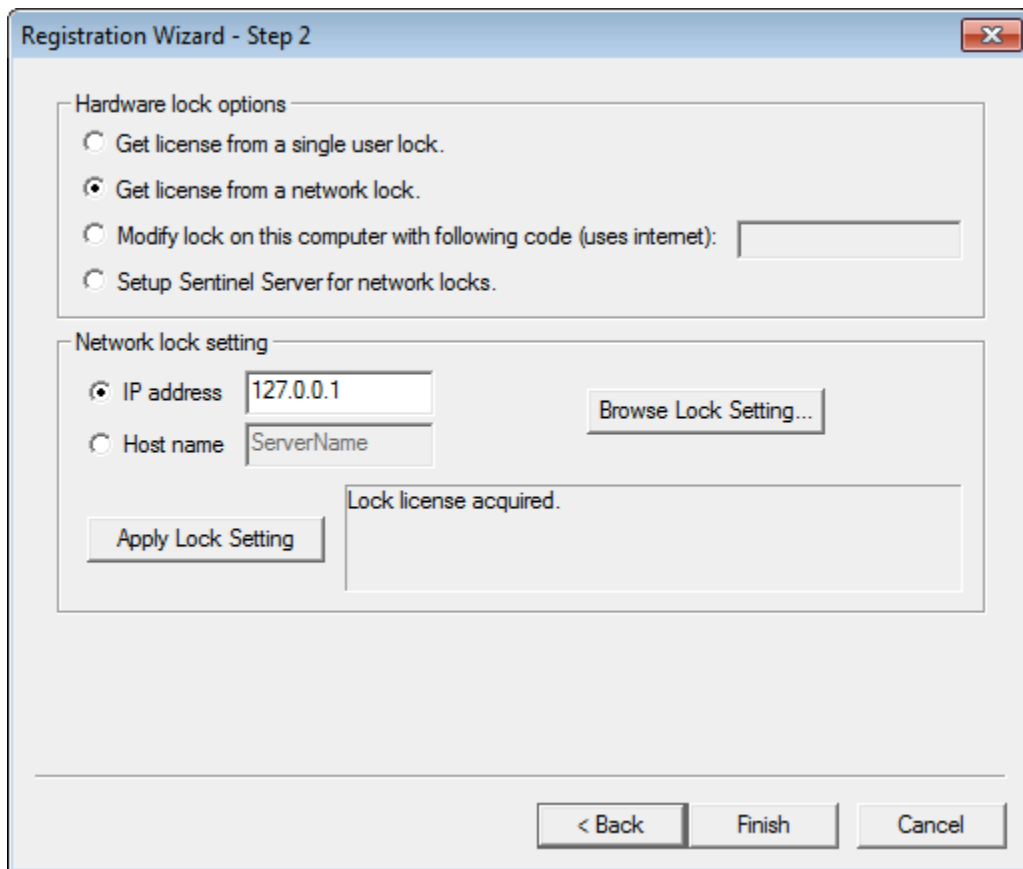
Start GMS and select the **Register...** button when the welcome screen appears. If the welcome screen does not appear automatically, select **Register...** from the **Help** menu in GMS.



- 1. Select **Hardware lock** for the Licensing method and click the **Next >** button.



2. In the Hardware lock options, select **Get license from a network lock** and click the **Next >** button.
3. Enter the **IP address** or **Host name** of the server hosting the network hardware lock.
4. Click the **Browse Lock Setting...** button. This opens a web browser and tests the a connection to the hardware lock over a local network.
5. Click the **Apply Lock Setting...** button.
6. Once the "Lock license acquired" message appears, click the **Finish** button.



- 7. The Register GMS dialog displays the registered components, licensing method, hardware lock serial number, and license expiration dates.

