

Register GMS with a Password

Applies to GMS versions: 9.x, 10.x
Please contact Aquaveo for help
with other versions

We're here to help – Please contact us with any questions

Sales & Billing:

+1(801) 691-5528

sales@aquaveo.com

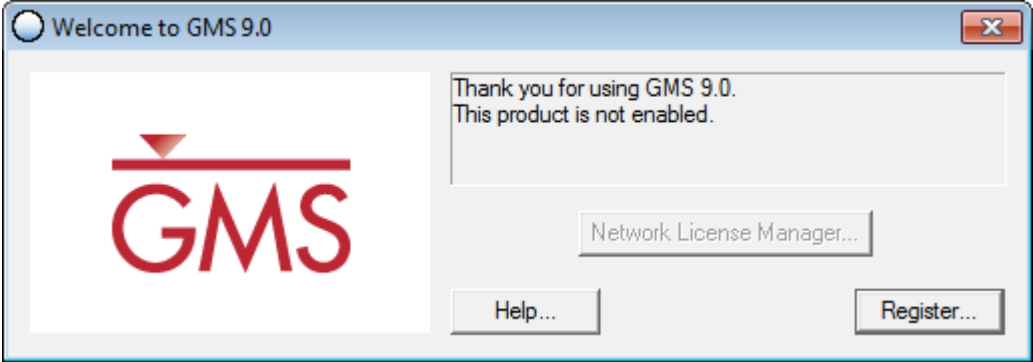
Technical Support:

+1(801) 691-5530

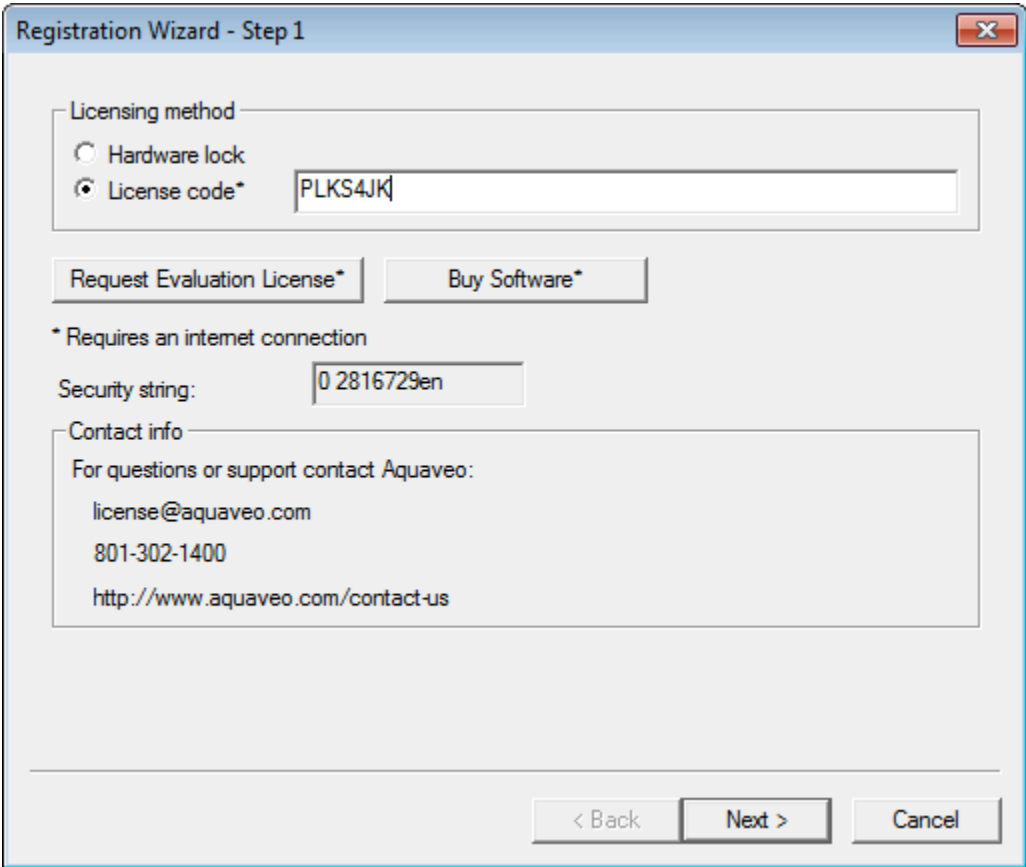
support@aquaveo.com

www.aquaveo.com

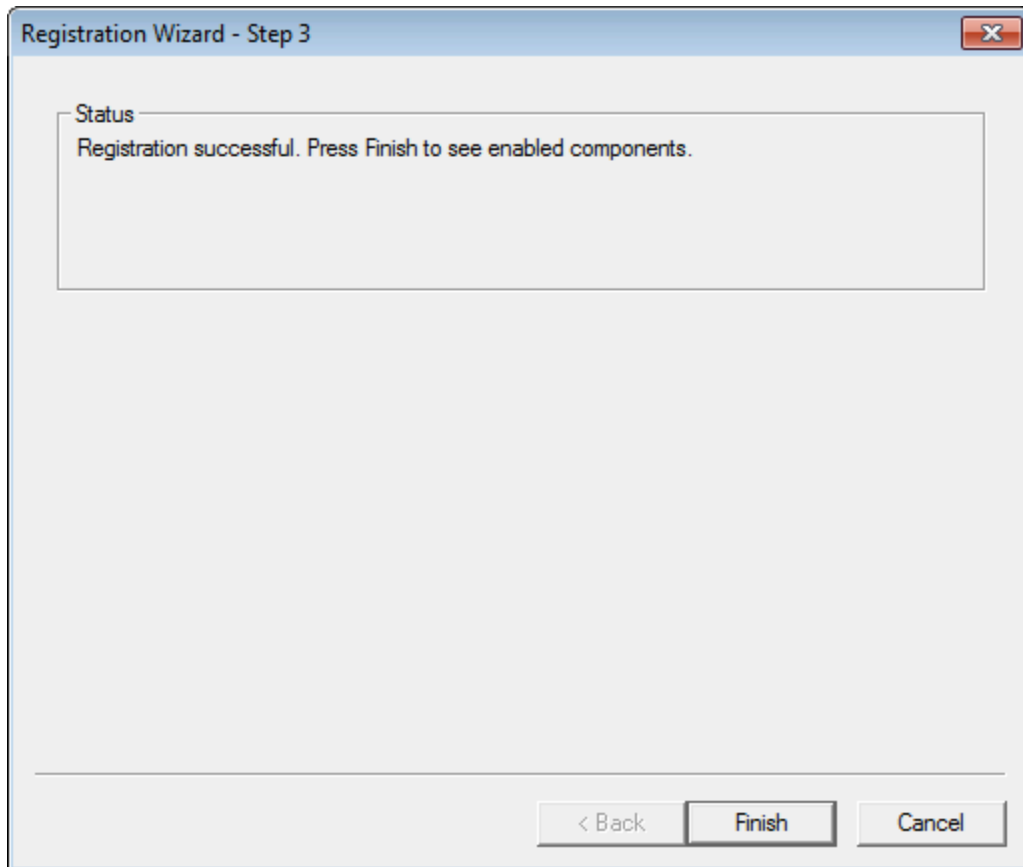
1. Start GMS and select the **Register...** button when the welcome screen appears. If the welcome screen does not appear automatically, select **Register...** from the **Help** menu in GMS.



2. Select **License code** for the Licensing method and enter the 7 digit alphanumeric code that begins with the letter P. Click the **Next >** button.



3. If the registration is successful, click **Finish** to exit the Registration Wizard.



- The Register GMS dialog displays the registered components, licensing method, and license expiration dates.

