

Register GMS with a Single User USB Hardware Lock

Applies to GMS versions: 9.x, 10.x
Please contact Aquaveo for help
with other versions

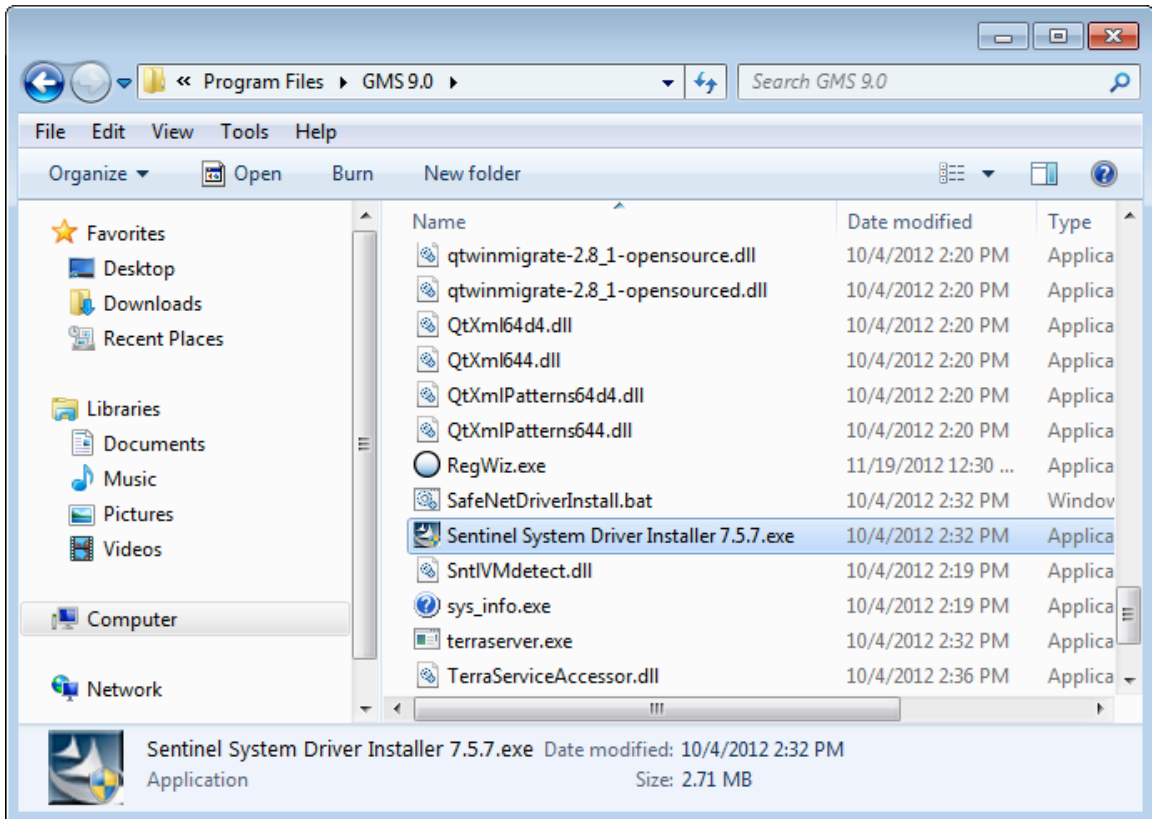
We're here to help – Please contact us with any questions

Sales & Billing: +1(801) 691-5528
Technical Support: +1(801) 691-5530

sales@aquaveo.com
support@aquaveo.com

www.aquaveo.com

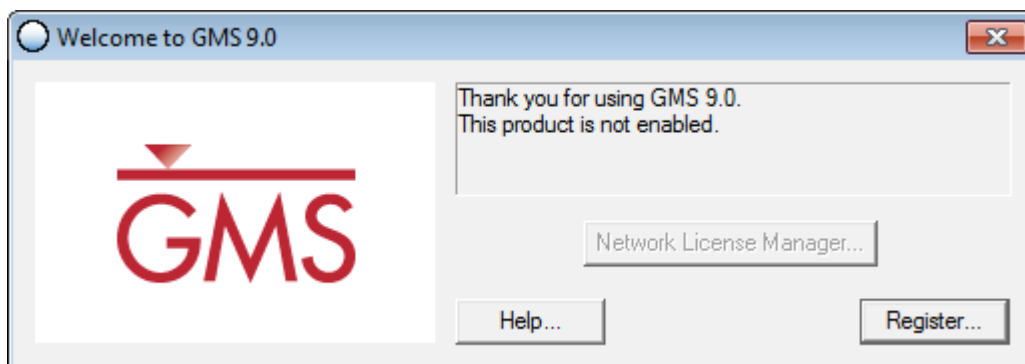
1. Install the hardware lock drivers. If hardware lock drivers have already been installed, skip to the next step. The drivers can be installed by running the **Sentinel System Driver Installer.exe** program found in the GMS installation directory.



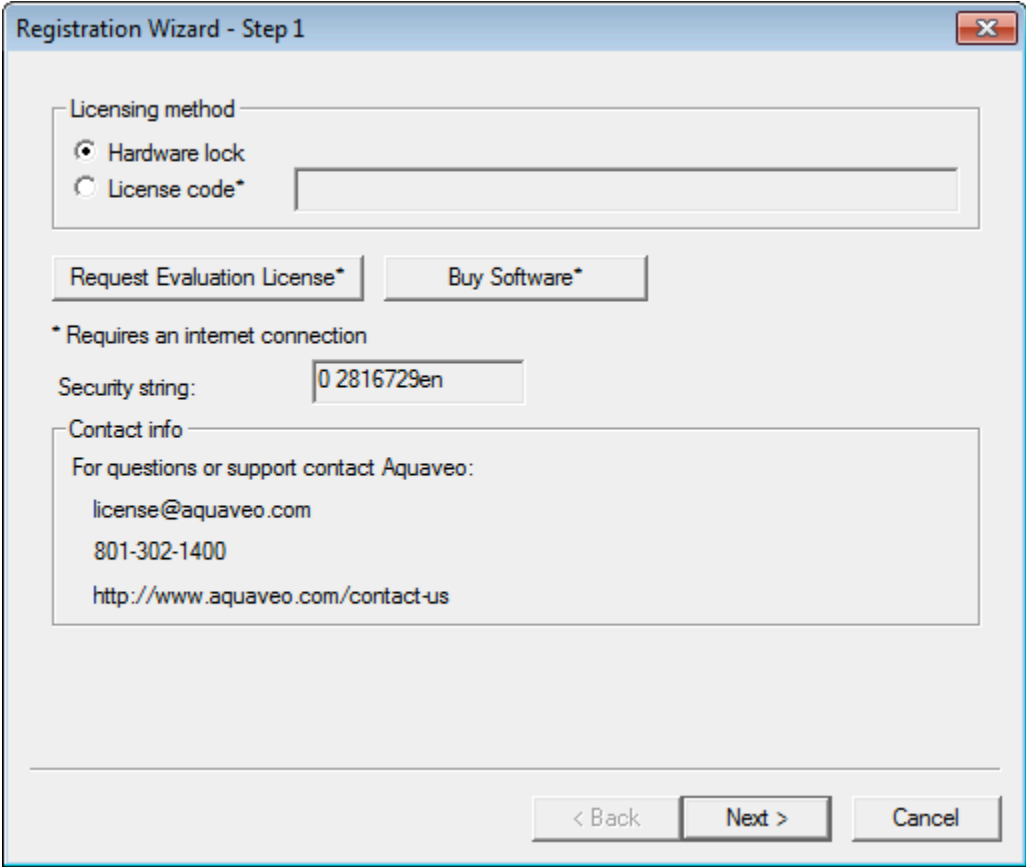
2. After installing the hardware lock drivers, plug the Aquaveo hardware lock into an available USB port.



3. Start GMS and the program should automatically detect the hardware lock. If the Welcome dialog appears, click the **Register...** button.



- 4. Select **Hardware lock** for the Licensing method and click the **Next >** button.



5. In the Hardware lock options, select **Get license from a single user lock** and click the **Next >** button.

Registration Wizard - Step 2

Hardware lock options

- Get license from a single user lock.
- Get license from a network lock.
- Modify lock on this computer with following code (uses internet):
- Setup Sentinel Server for network locks.

Network lock setting

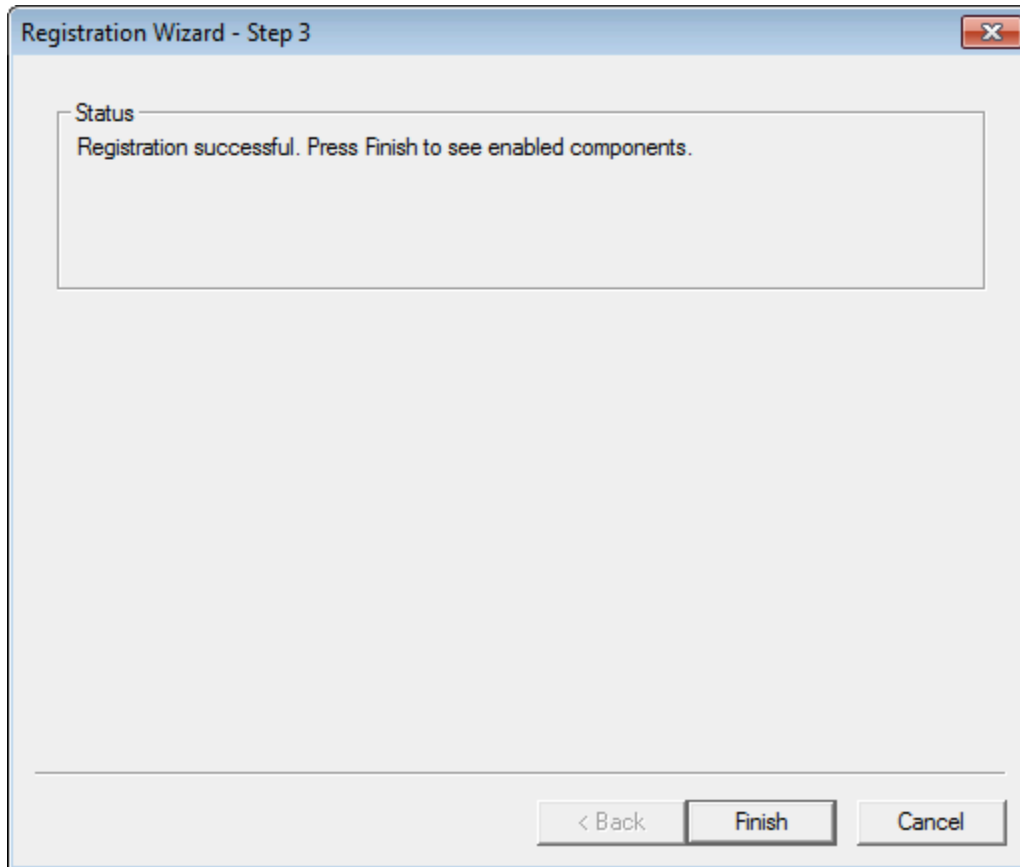
- IP address
- Host name

Apply Lock Setting

Browse Lock Setting...

< Back Next > Cancel

6. If the registration is successful, click **Finish** to exit the Registration Wizard.



- The Register GMS dialog displays the registered components, licensing method, and license expiration dates.

