



## **Re-burn a Single User USB Hardware Lock for SMS**

Applies to SMS versions: 11.x, 12.x  
Please contact Aquaveo for help  
with other versions

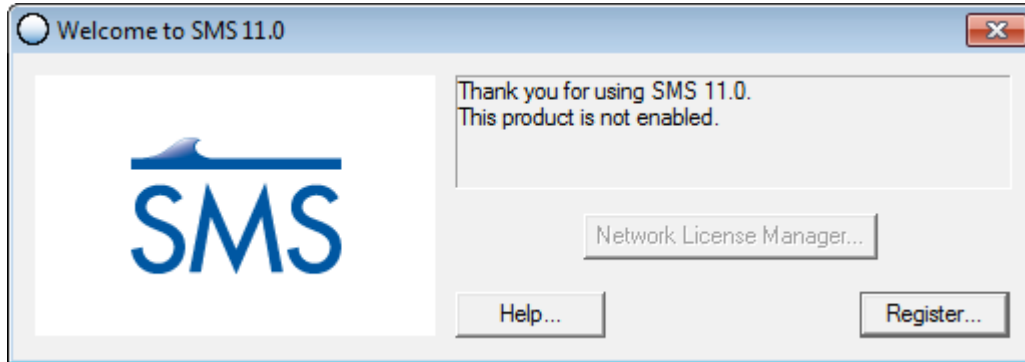
**We're here to help – Please contact us with any questions**

**Sales & Billing:** +1(801) 691-5528  
**Technical Support:** +1(801) 691-5530

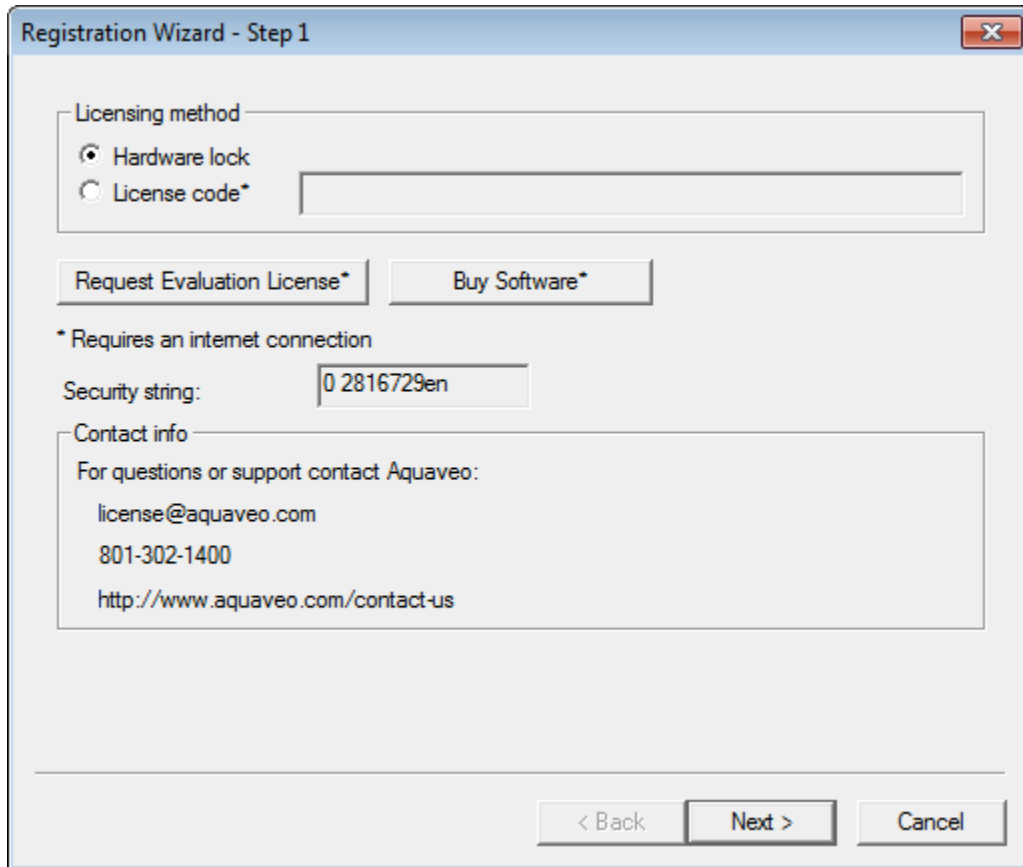
[sales@aquaveo.com](mailto:sales@aquaveo.com)  
[support@aquaveo.com](mailto:support@aquaveo.com)

[www.aquaveo.com](http://www.aquaveo.com)

1. Plug the Aquaveo hardware lock into a computer with hardware lock drivers and SMS installed.
2. Start SMS and select the **Register...** button when the welcome screen appears. If the welcome screen does not appear automatically, select **Register...** from the **Help** menu in SMS.



3. Select **Hardware lock** for the Licensing method and click the **Next >** button.



The image shows a screenshot of a software registration wizard window titled "Registration Wizard - Step 1". The window has a standard Windows-style title bar with a close button (X) in the top right corner. The main content area is divided into several sections:

- Licensing method:** A group box containing two radio buttons. The "Hardware lock" option is selected, and the "License code\*" option is unselected. A text input field is positioned to the right of the "License code\*" option.
- Buttons:** Two buttons are located below the licensing options: "Request Evaluation License\*" and "Buy Software\*".
- Footnote:** A small asterisked note states "\* Requires an internet connection".
- Security string:** A text input field containing the value "0 2816729en".
- Contact info:** A group box containing the text "For questions or support contact Aquaveo:" followed by the email address "license@aquaveo.com", the phone number "801-302-1400", and the website URL "http://www.aquaveo.com/contact-us".
- Navigation:** At the bottom of the window, there are three buttons: "< Back", "Next >", and "Cancel".

4. In the Hardware lock options, select **Modify lock on this computer with the following code** and click the **Next >** button.

Registration Wizard - Step 2

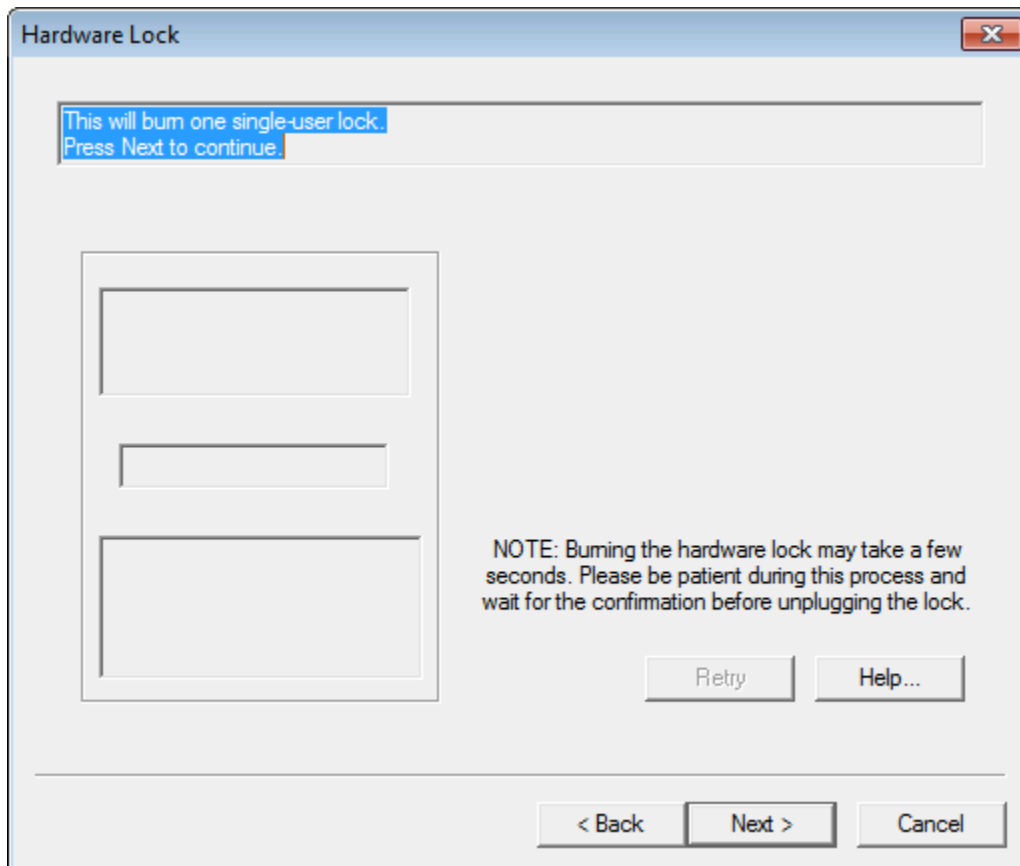
Hardware lock options

- Get license from a single user lock.
- Get license from a network lock.
- Modify lock on this computer with following code (uses internet):
- Setup Sentinel Server for network locks.

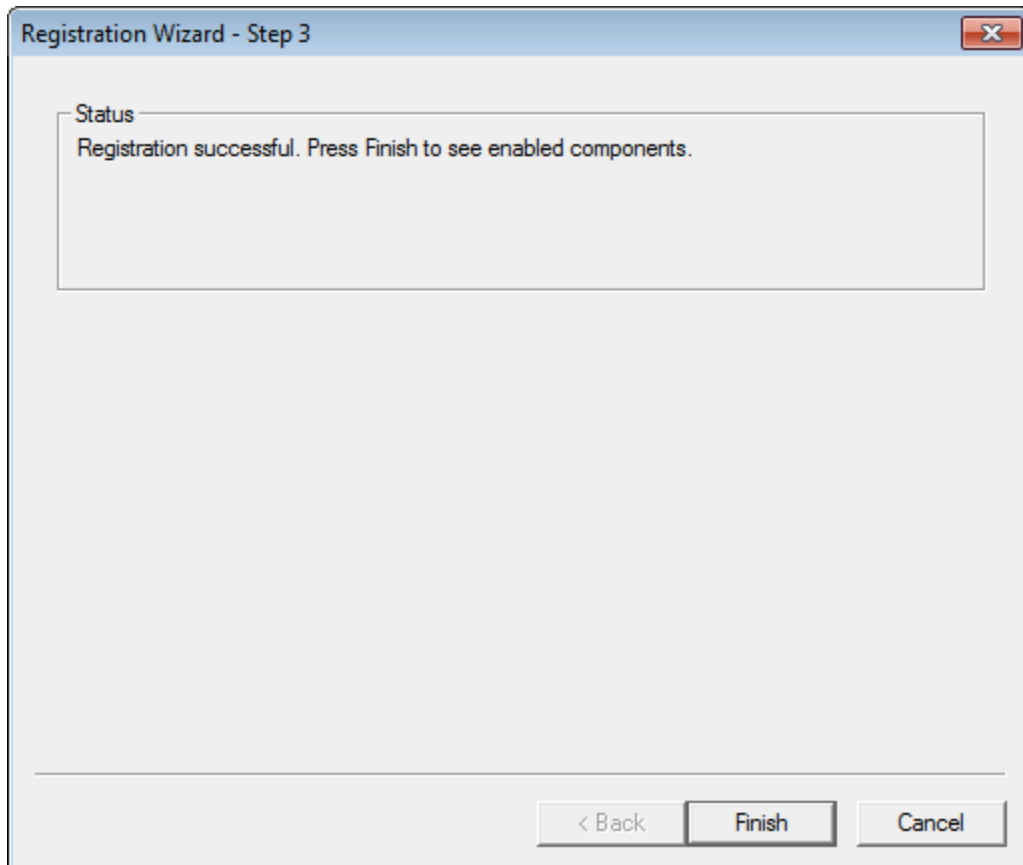
Network lock setting

- IP address
- Host name

5. In the Hardware Lock dialog, click the **Next >** button to burn the hardware lock.



6. If the registration is successful, click **Finish** to exit the Registration Wizard.



- The Register SMS dialog indicates the registered components, the licensing method, and the license expiration dates.

