



# Update a Wibu CodeMeter Hardware Lock for TUFLOW

**We're here to help – Please contact us with any questions**

**Sales & Billing:** +1(801) 691-5528

[sales@aquaveo.com](mailto:sales@aquaveo.com)

**Technical Support:** +1(801) 691-5530

[support@aquaveo.com](mailto:support@aquaveo.com)

[www.aquaveo.com](http://www.aquaveo.com)

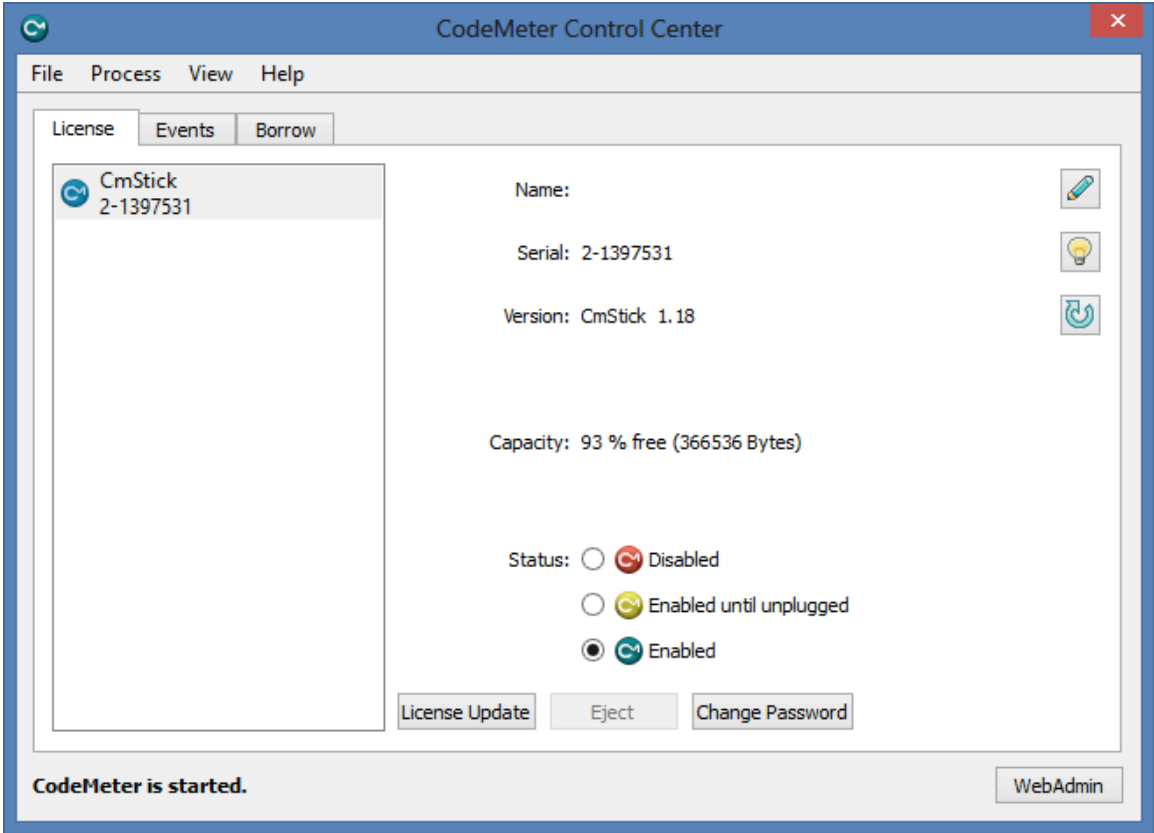
1. Plug the Wibu CodeMeter hardware lock into a computer that has the CodeMeter software installed.



2. When the CodeMeter software recognizes the hardware lock, the CodeMeter icon in the Windows System Tray will change from gray to blue-green.



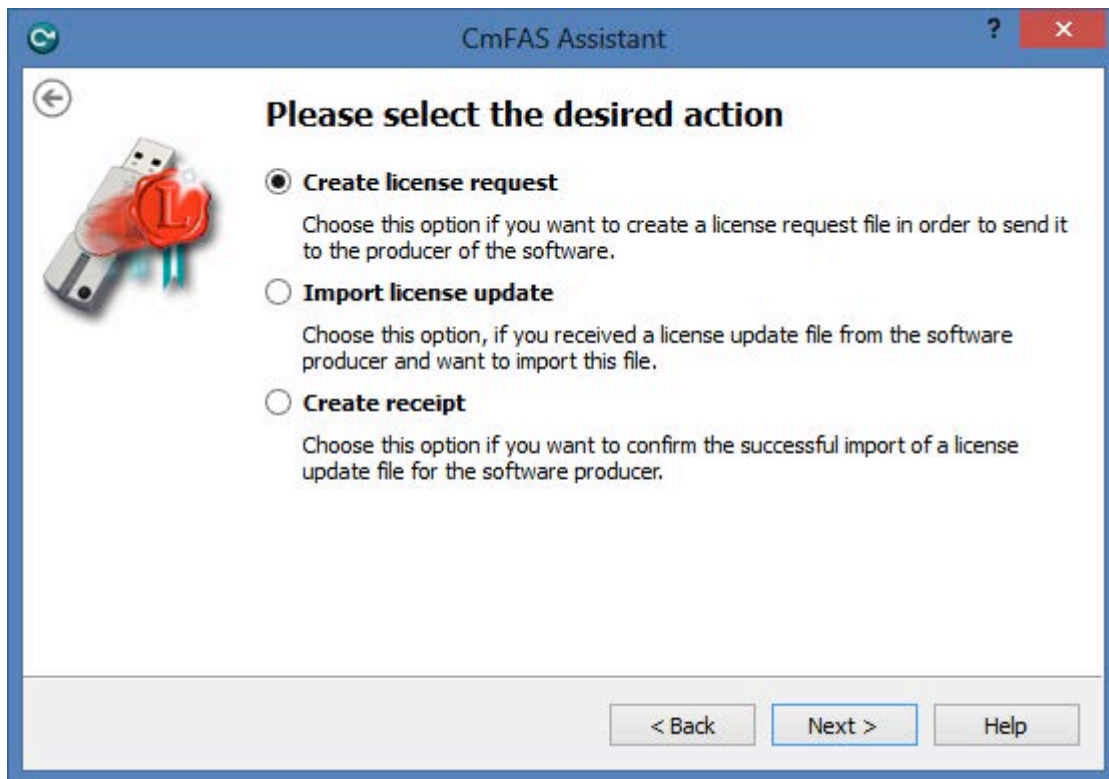
- 3. Right click on the CodeMeter icon and select **Show** from the menu. The CodeMeter Control Center appears.



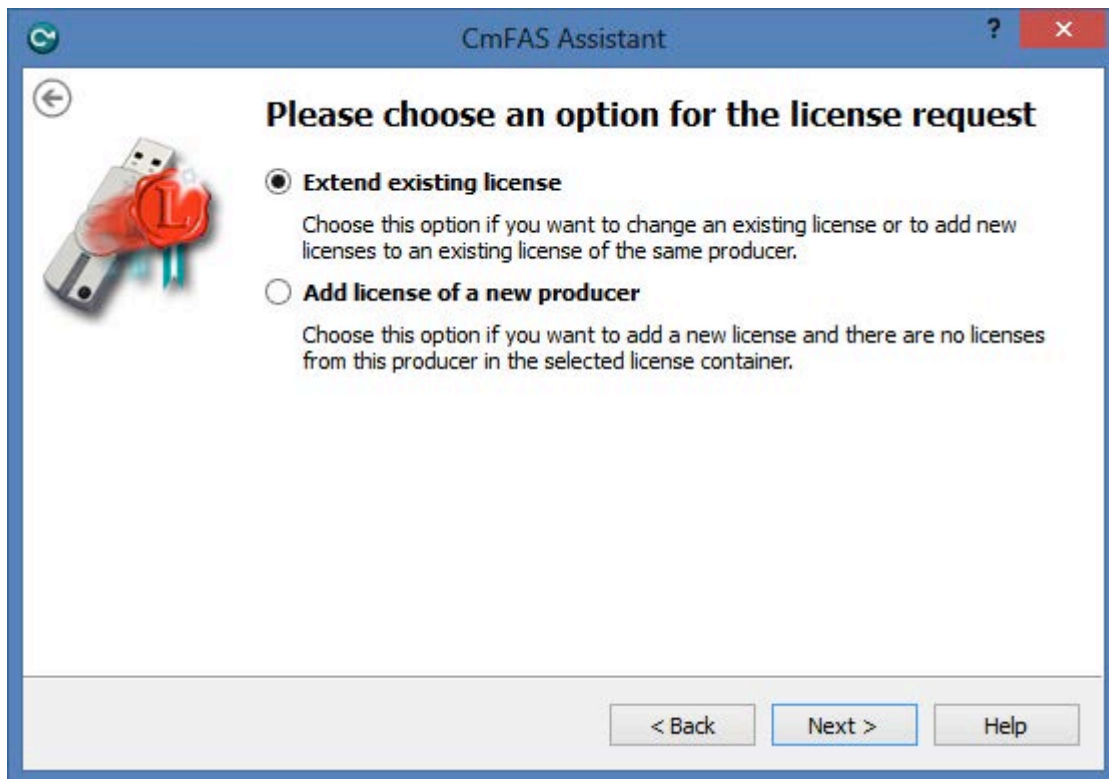
4. Click the **License Update** button. In the CmFAS Assistant dialog, click the **Next >** button.



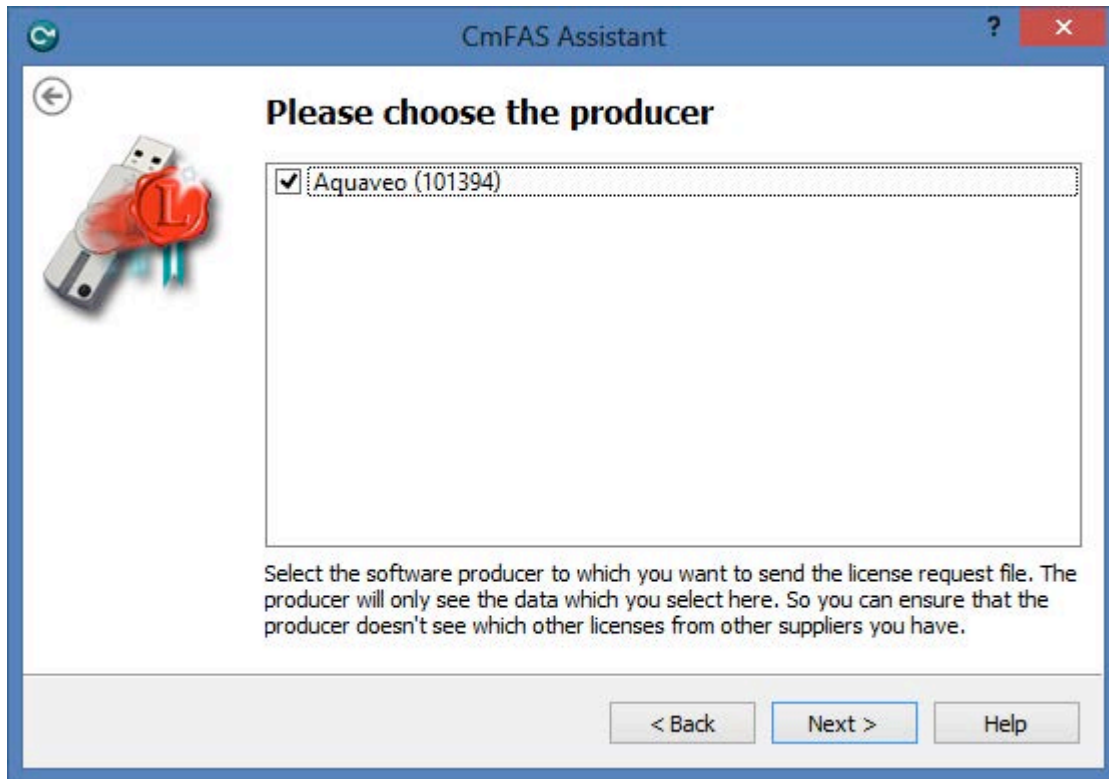
5. Select the **Create license request** button and click the **Next >** button.



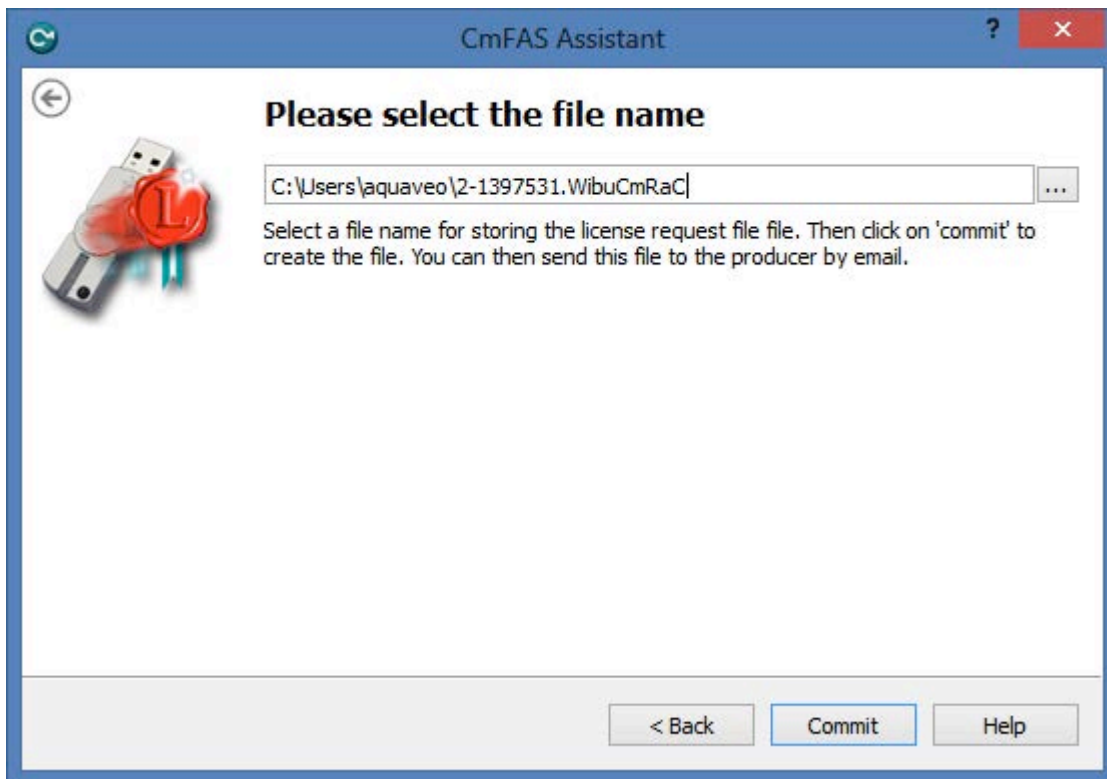
6. Select the **Extend existing license** option and click the **Next >** button.



7. Check the **Aquaveo** toggle box and click the **Next >** button.

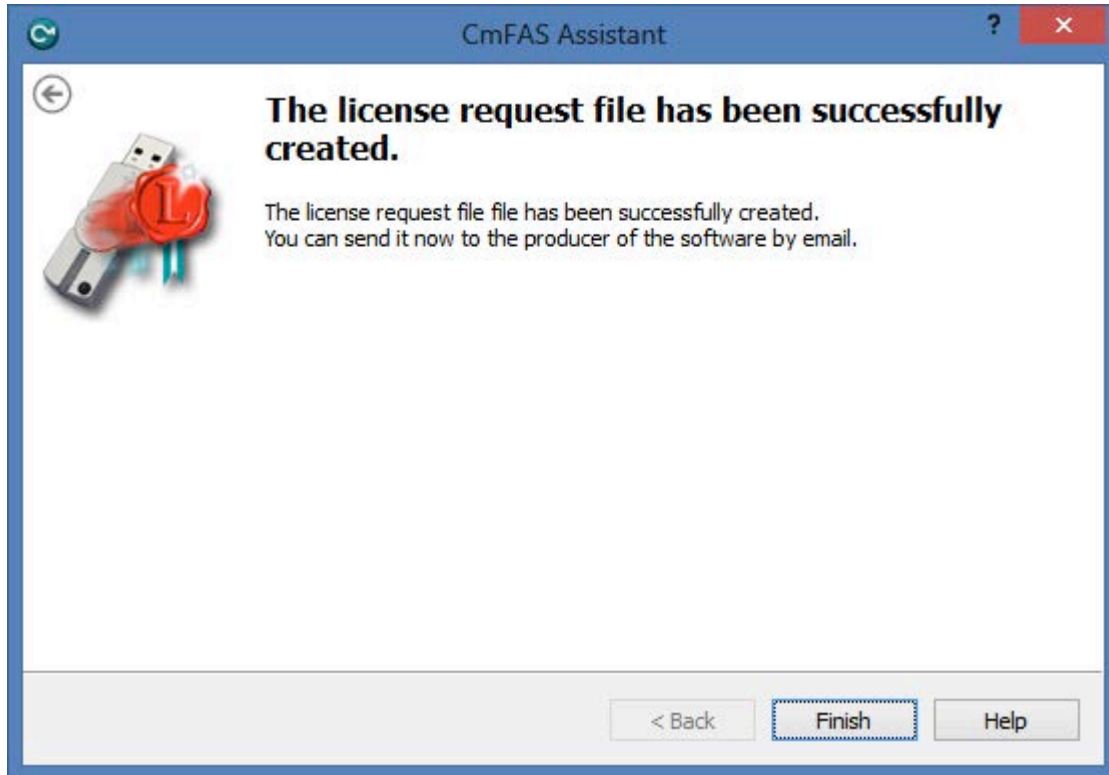


8. Specify the path and file name. Click the **Commit** button.

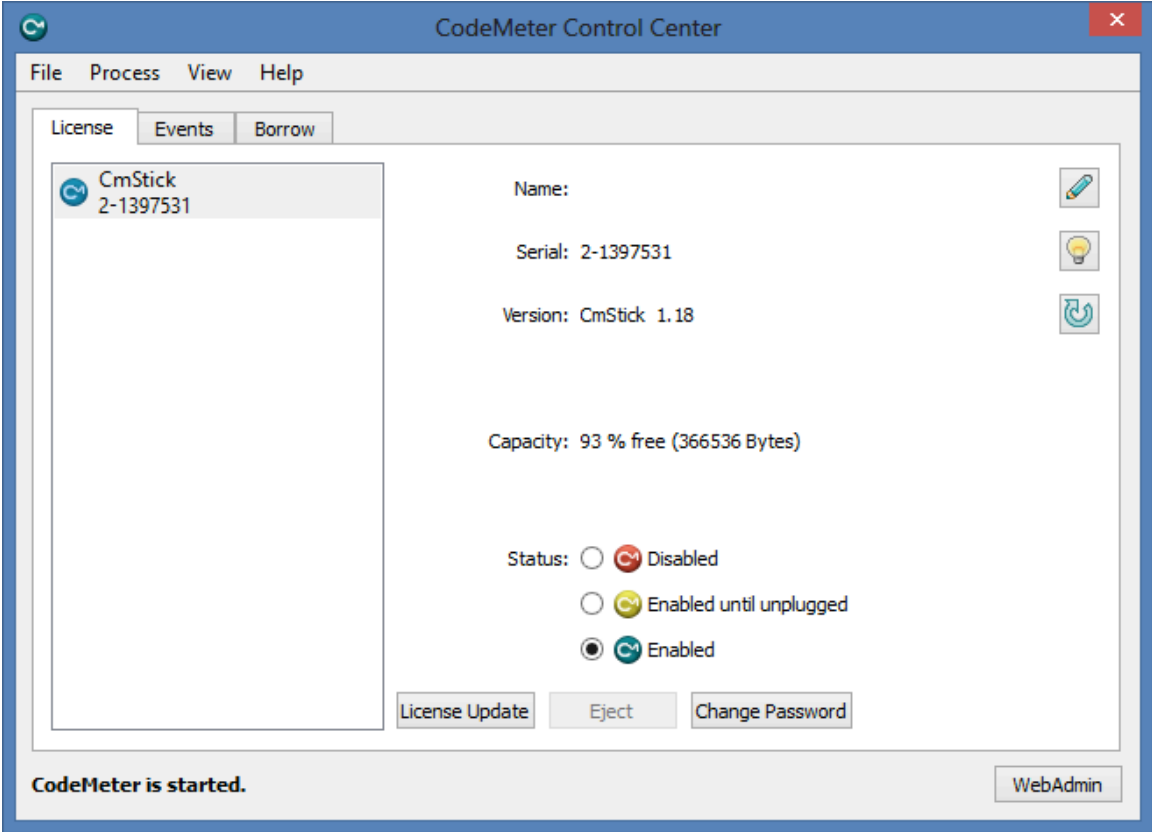




9. A license request file with the extension .WibuCmRaC is created. Email this file to *license@aquaveo.com*. Click the **Finish** button to exit the CmFAS Assistant.



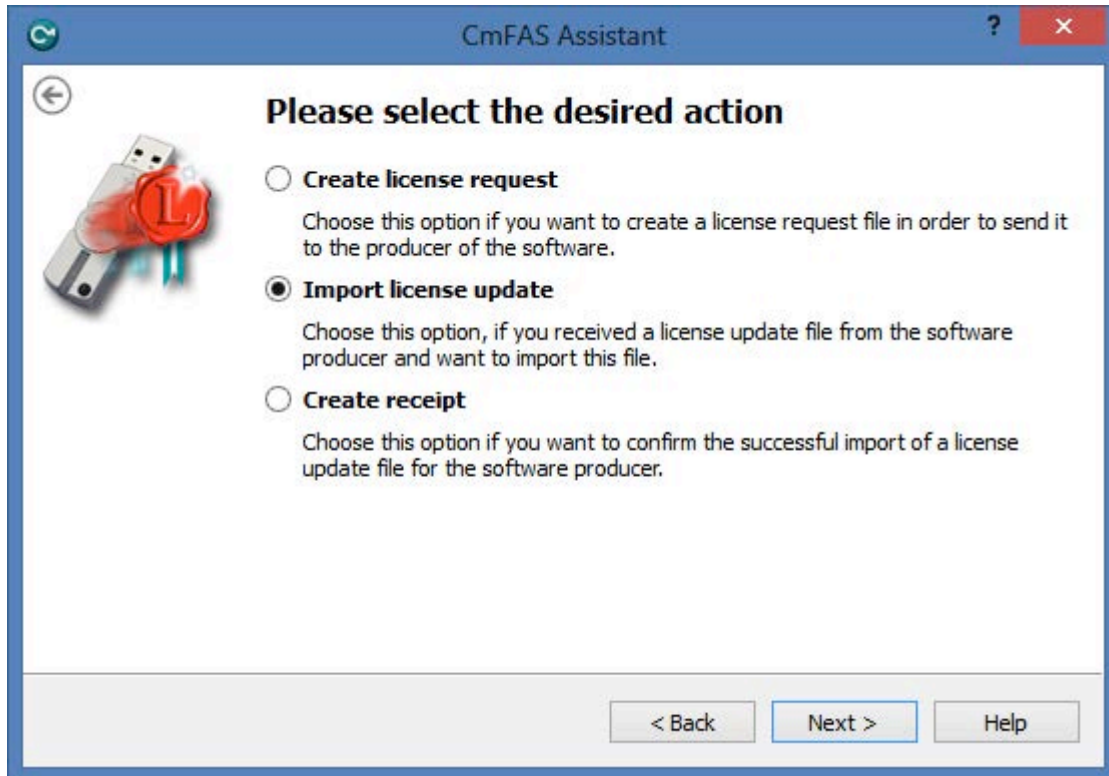
- 10. Within one business day, a license file with the extension .WibuCmRaU will be emailed to you. After receiving the file, return to the CodeMeter Control Center and click the **License Update** button.



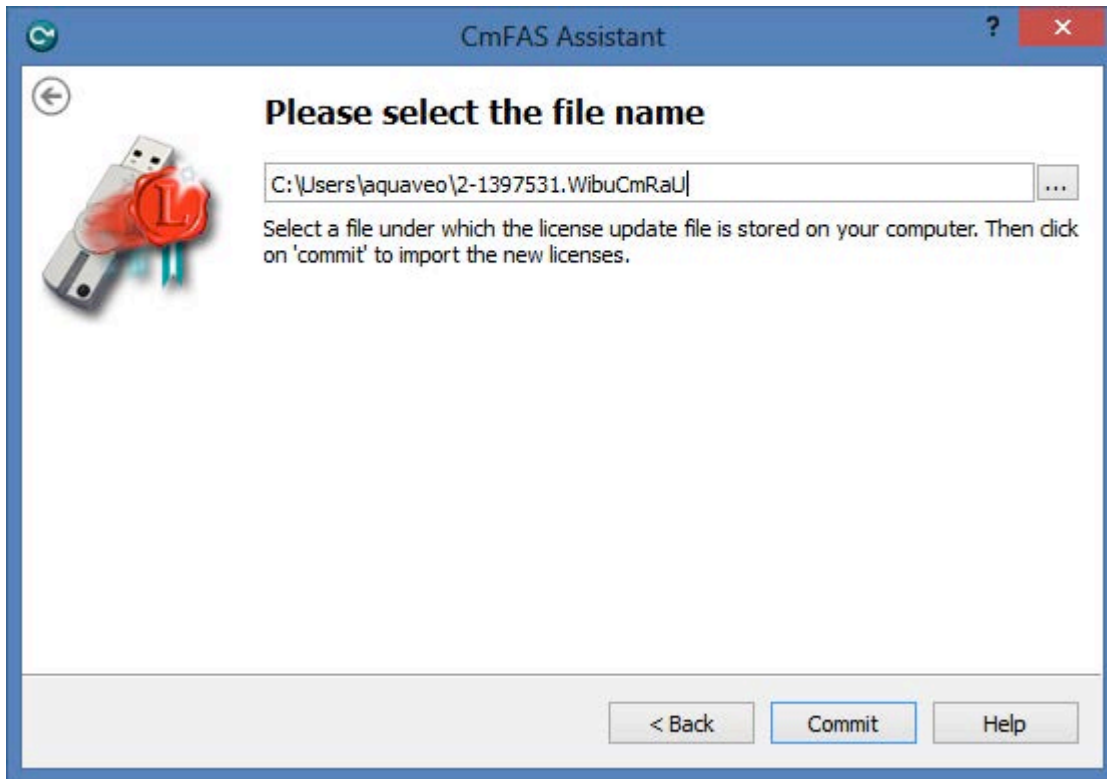
11. In the CmFAS Assistant dialog, click the **Next >** button.



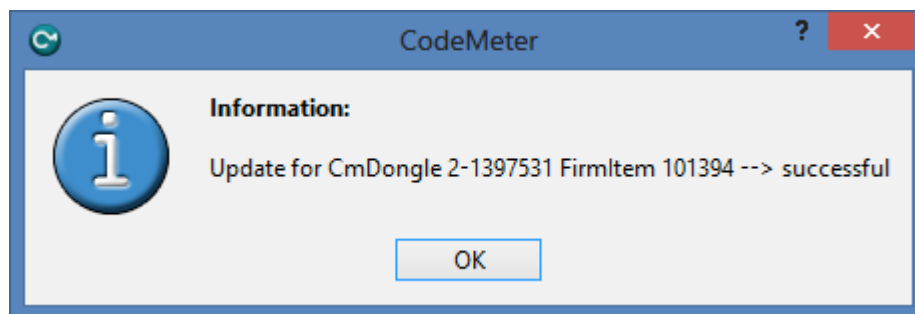
12. Select the **Import license update** option and click the **Next >** button.



13. Verify the path and file name of the .WibuCmRaU file received from Aquaveo. Click the **Commit** button.



14. The CodeMeter software will confirm the hardware lock update. Click the **OK** button.



15. The TUFLOW licenses can be verified by returning to the CodeMeter Control Center and clicking the **WebAdmin** button. In the CodeMeter WebAdmin, click the **Content** tab and then click **Licenses**.

The screenshot shows the CodeMeter WebAdmin interface. At the top, there is a navigation bar with tabs: Home, Content, Server, Configuration, Diagnosis, Info, and Help. Below the navigation bar, there is a breadcrumb trail: CmContainer | Licenses | User Data | Backup/Restore. A dropdown menu for CmContainer is set to 2-1397531. The main content area displays two tables of licenses. The first table is titled '100003 | Bundling Articles' and contains one row for 'SecuriKey Lite'. The second table is titled '101394 | Aquaveo' and contains five rows for various TUFLOW products, including Local, Local Threads, Local Multiple Domains, Network, and Network Threads. Each row in the tables lists the Product Code, Name, Unit Counter, Expiration Time, Activation Time, and License Quantity.

100003   Bundling Articles					
Product Code	Name	Unit Counter	Expiration Time	Activation Time	License Quantity
<a href="#">1</a>	SecuriKey Lite	n/a	n/a	n/a	1

101394   Aquaveo					
Product Code	Name	Unit Counter	Expiration Time	Activation Time	License Quantity
<a href="#">20</a>	TUFLOW Local	n/a	2019-12-31 17:00:00	n/a	4
<a href="#">21</a>	TUFLOW Local Threads	n/a	n/a	n/a	8
<a href="#">22</a>	TUFLOW Local Multiple Domains	n/a	n/a	n/a	4
<a href="#">920</a>	TUFLOW Network	n/a	2019-12-31 17:00:00	n/a	4
<a href="#">921</a>	TUFLOW Network Threads	n/a	2019-12-31 17:00:00	n/a	8