



Re-burn a Single User USB Hardware Lock for WMS

Applies to WMS versions: 8.4, 9.0, 9.1, 10.0, 10.1
Please contact Aquaveo for help
with other versions

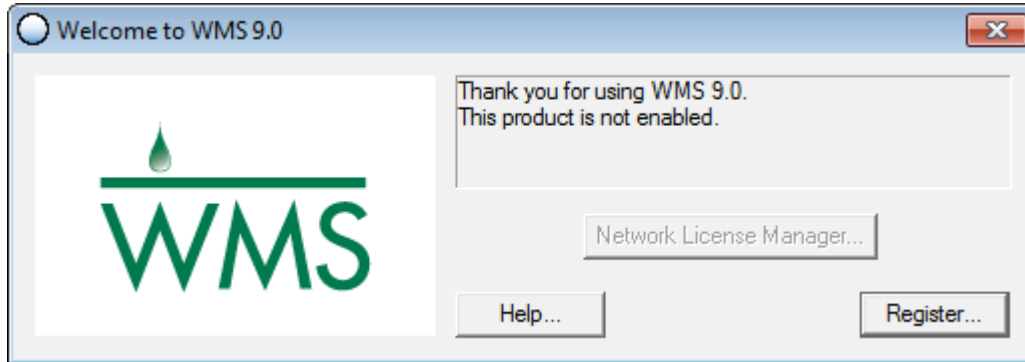
We're here to help – Please contact us with any questions

Sales & Billing: +1(801) 691-5528
Technical Support: +1(801) 691-5530

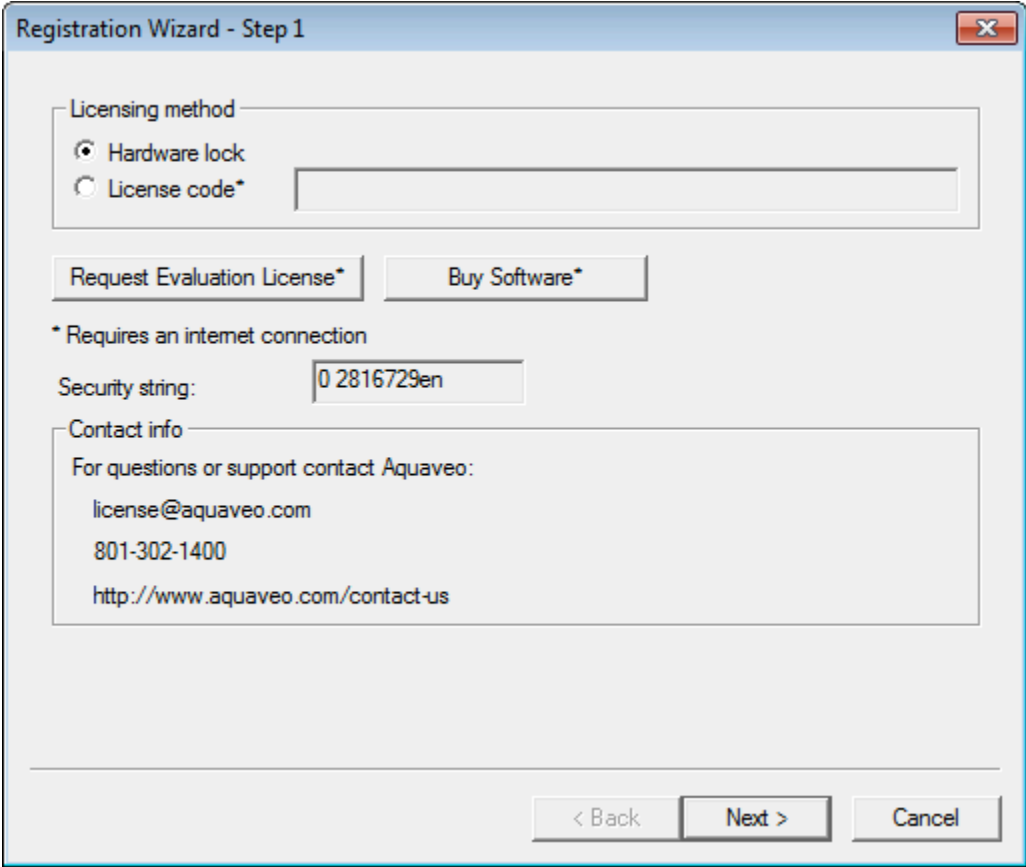
sales@aquaveo.com
support@aquaveo.com

www.aquaveo.com

1. Plug the Aquaveo hardware lock into a computer with hardware lock drivers and WMS installed.
2. Start WMS and select the **Register...** button when the welcome screen appears. If the welcome screen does not appear automatically, select **Register...** from the **Help** menu in WMS.



- 3. Select **Hardware lock** for the Licensing method and click the **Next >** button.



4. In the Hardware lock options, select **Modify lock on this computer with the following code** and click the **Next >** button.

Registration Wizard - Step 2

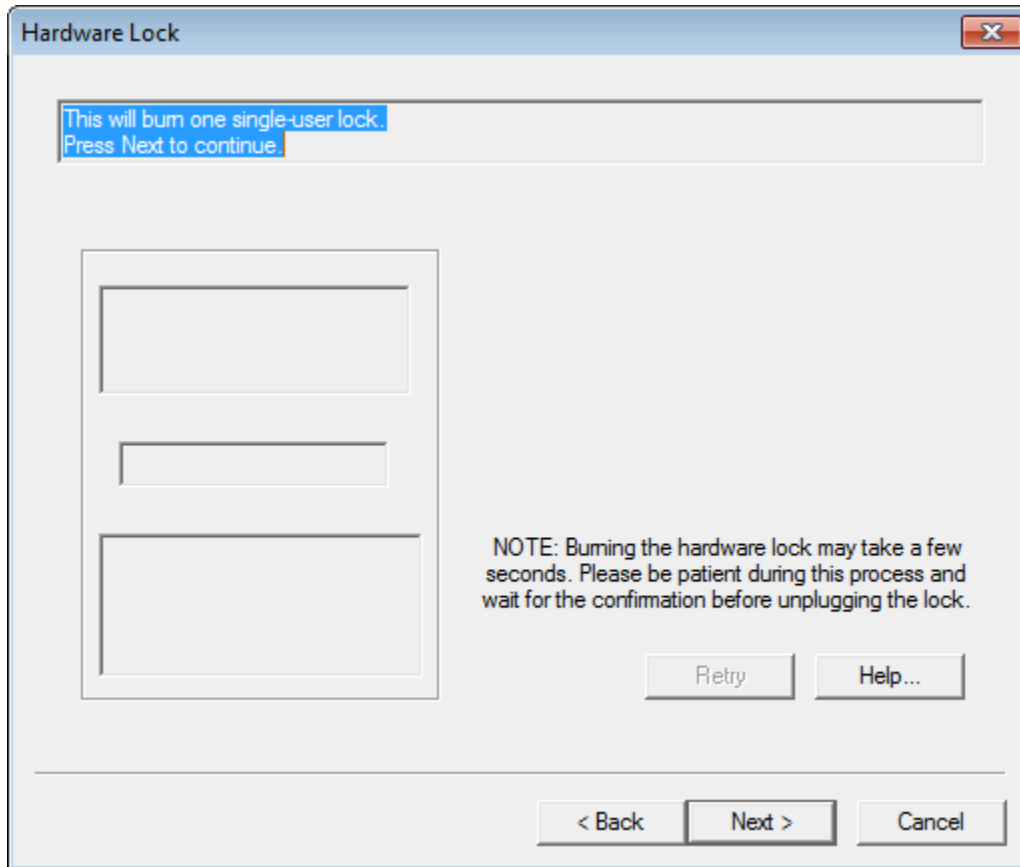
Hardware lock options

- Get license from a single user lock.
- Get license from a network lock.
- Modify lock on this computer with following code (uses internet):
- Setup Sentinel Server for network locks.

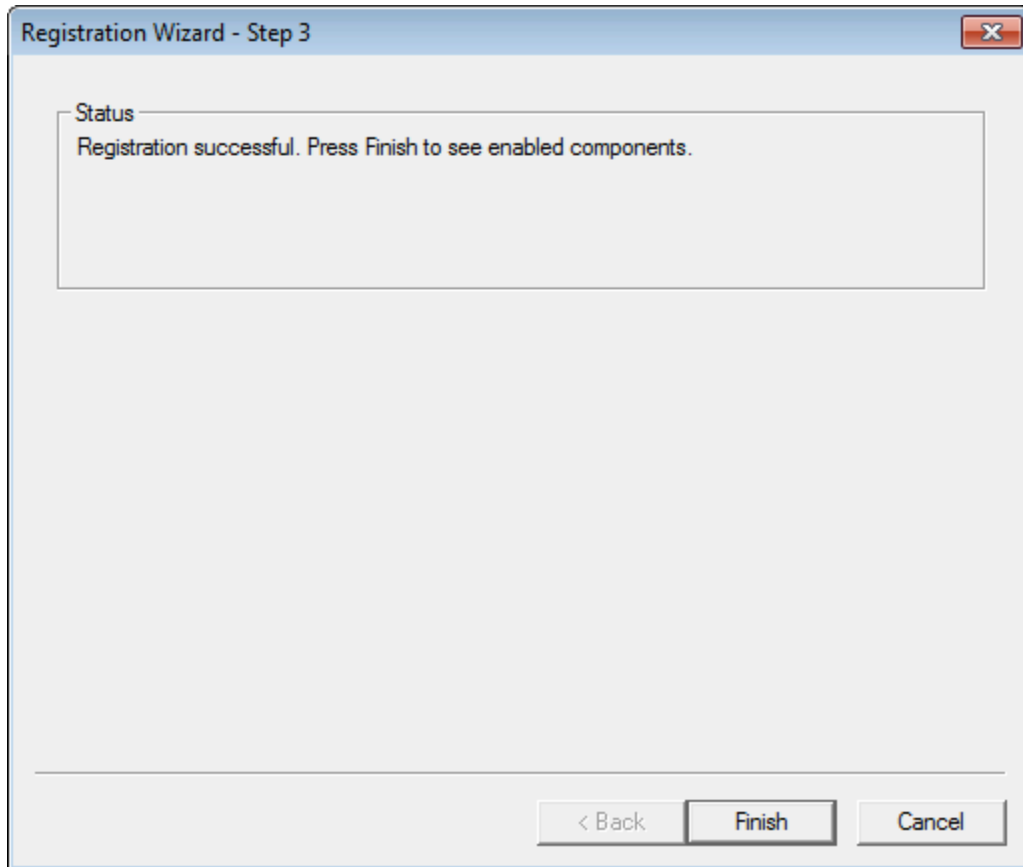
Network lock setting

- IP address
- Host name

5. In the Hardware Lock dialog, click the **Next >** button to burn the hardware lock.



6. If the registration is successful, click **Finish** to exit the Registration Wizard.



7. The Register WMS dialog indicates the registered components, the licensing method, and the license expiration dates.

