



Register WMS with a Network USB Hardware Lock

Applies to WMS versions: 8.4, 9.0, 9.1, 10.0, 10.1
Please contact Aquaveo for help
with other versions

We're here to help – Please contact us with any questions

Sales & Billing:

+1(801) 691-5528

sales@aquaveo.com

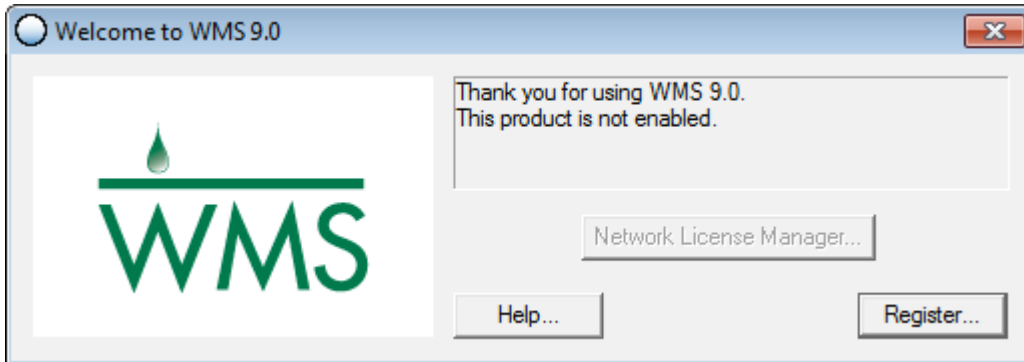
Technical Support:

+1(801) 691-5530

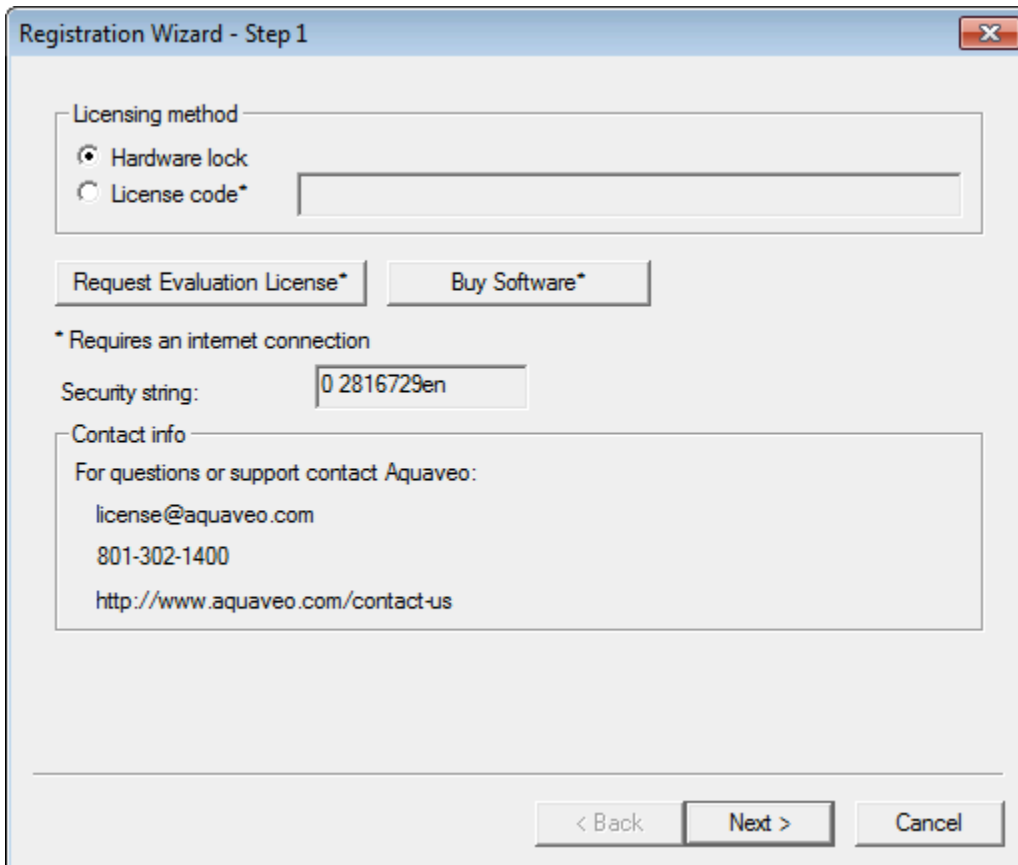
support@aquaveo.com

www.aquaveo.com

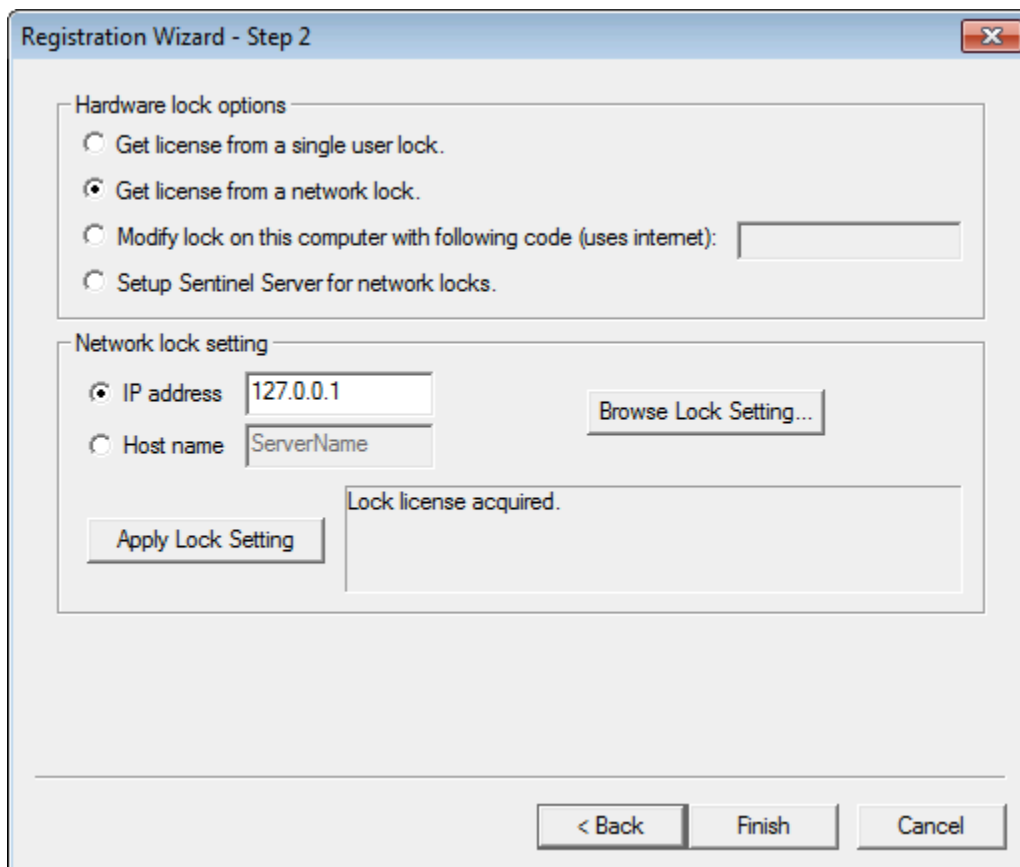
1. Start WMS and select the **Register...** button when the welcome screen appears. If the welcome screen does not appear automatically, select **Register...** from the **Help** menu in WMS.



2. Select **Hardware lock** for the Licensing method and click the **Next >** button.



3. In the Hardware lock options, select **Get license from a network lock** and click the **Next >** button.
4. Enter the **IP address** or **Host name** of the server hosting the network hardware lock.
5. Click the **Browse Lock Setting...** button. This opens a web browser and tests the a connection to the hardware lock over a local network.
6. Click the **Apply Lock Setting...** button.
7. Once the "Lock license acquired" message appears, click the **Finish** button.



- The Register WMS dialog displays the registered components, licensing method, hardware lock serial number, and license expiration dates.

