



Register WMS with a Single User USB Hardware Lock

Applies to WMS versions: 8.4, 9.0, 9.1, 10.0, 10.1
Please contact Aquaveo for help
with other versions

We're here to help – Please contact us with any questions

Sales & Billing:

+1(801) 691-5528

sales@aquaveo.com

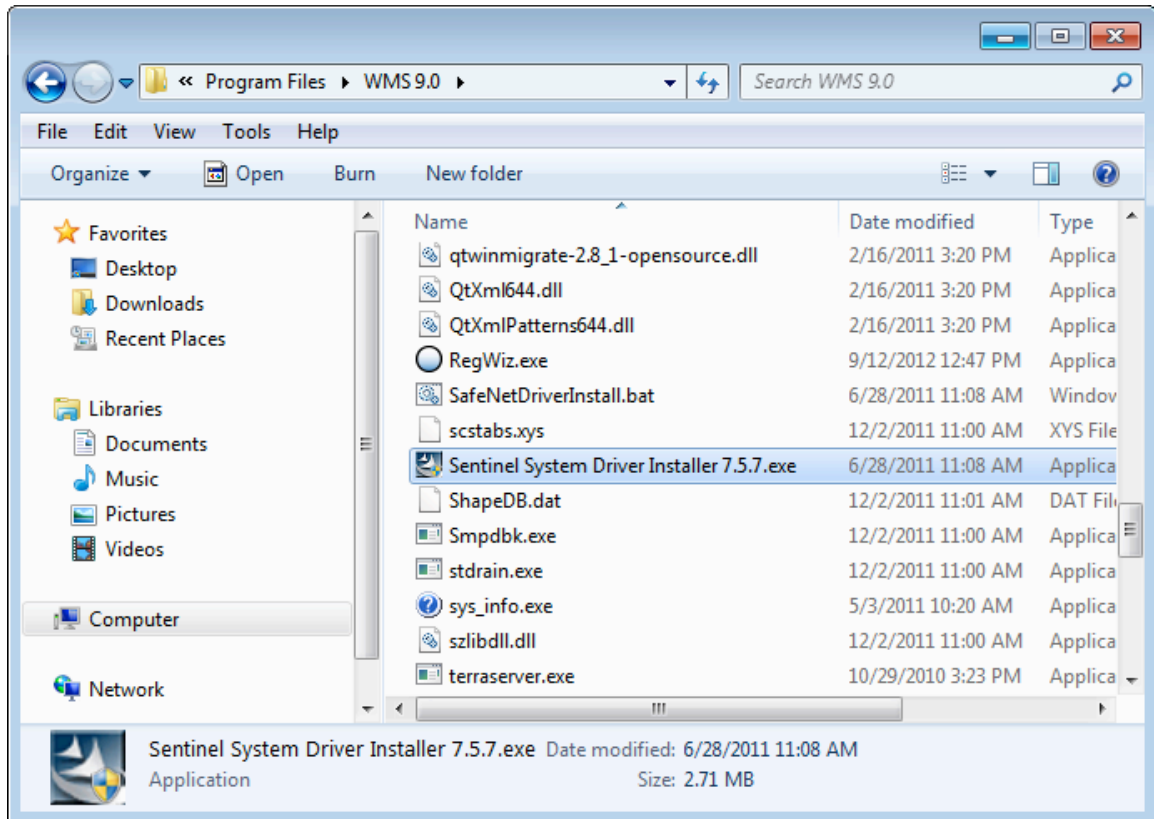
Technical Support:

+1(801) 691-5530

support@aquaveo.com

www.aquaveo.com

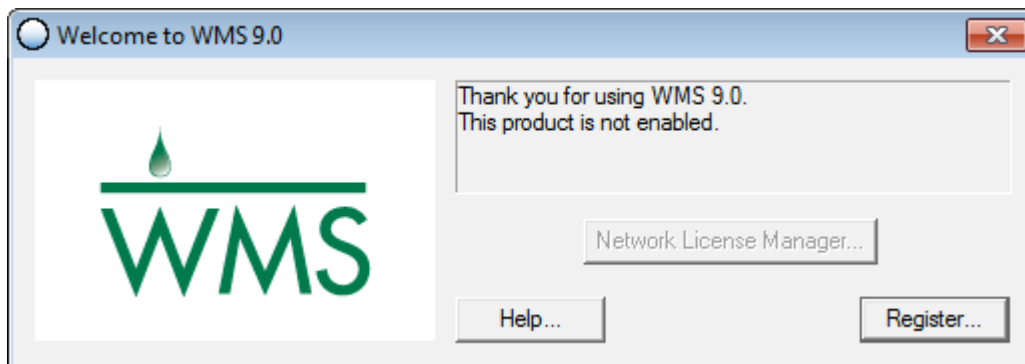
1. Install the hardware lock drivers. If hardware lock drivers have already been installed, skip to the next step. The drivers can be installed by running the **Sentinel System Driver Installer.exe** program found in the WMS installation directory.



2. After installing the hardware lock drivers, plug the Aquaveo hardware lock into an available USB port.



3. Start WMS and the program should automatically detect the hardware lock. If the Welcome dialog appears, click the **Register...** button.



4. Select **Hardware lock** for the Licensing method and click the **Next >** button.

Registration Wizard - Step 1

Licensing method

Hardware lock

License code*

Request Evaluation License* Buy Software*

* Requires an internet connection

Security string: 0 2816729en

Contact info

For questions or support contact Aquaveo:

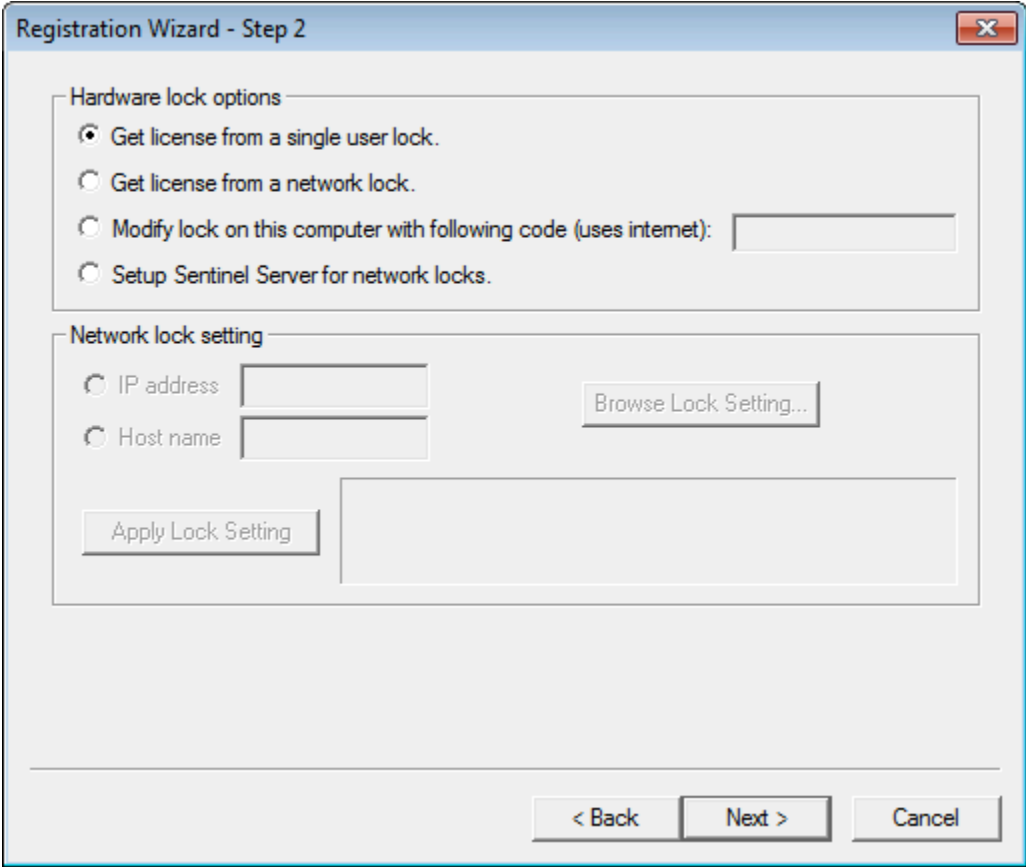
license@aquaveo.com

801-302-1400

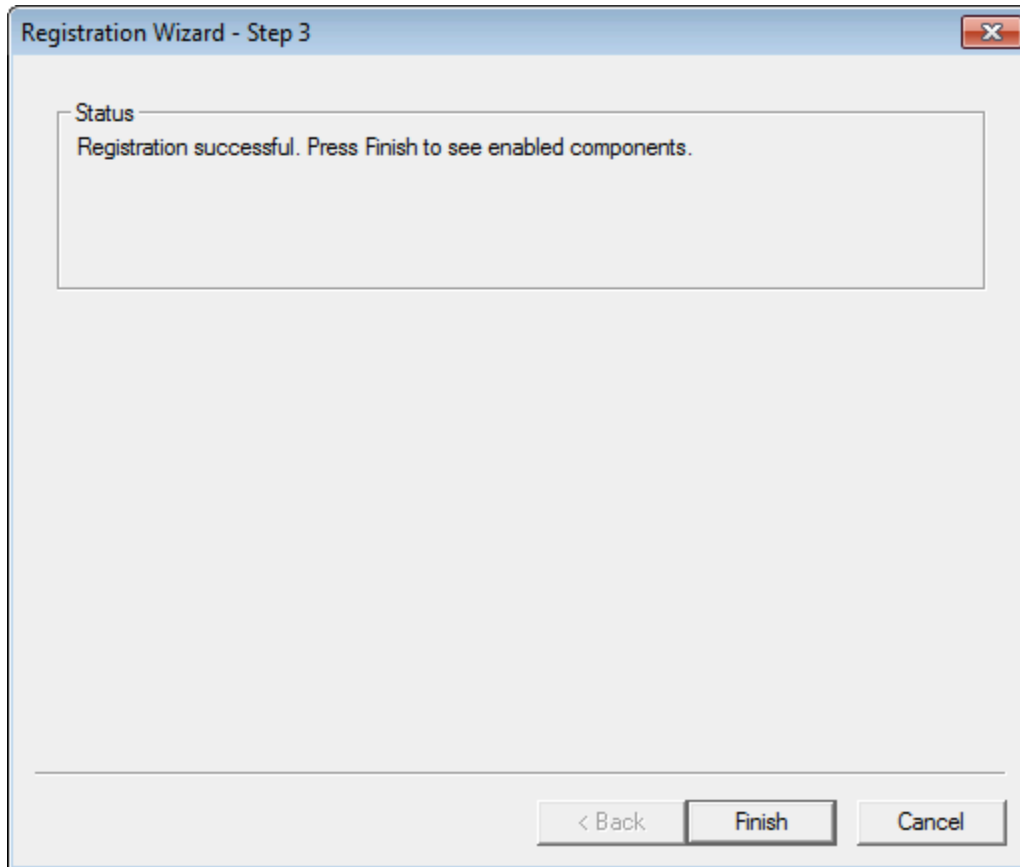
<http://www.aquaveo.com/contact-us>

< Back Next > Cancel

5. In the Hardware lock options, select **Get license from a single user lock** and click the **Next >** button.



6. If the registration is successful, click **Finish** to exit the Registration Wizard.



- The Register WMS dialog displays the registered components, licensing method, and license expiration dates.

